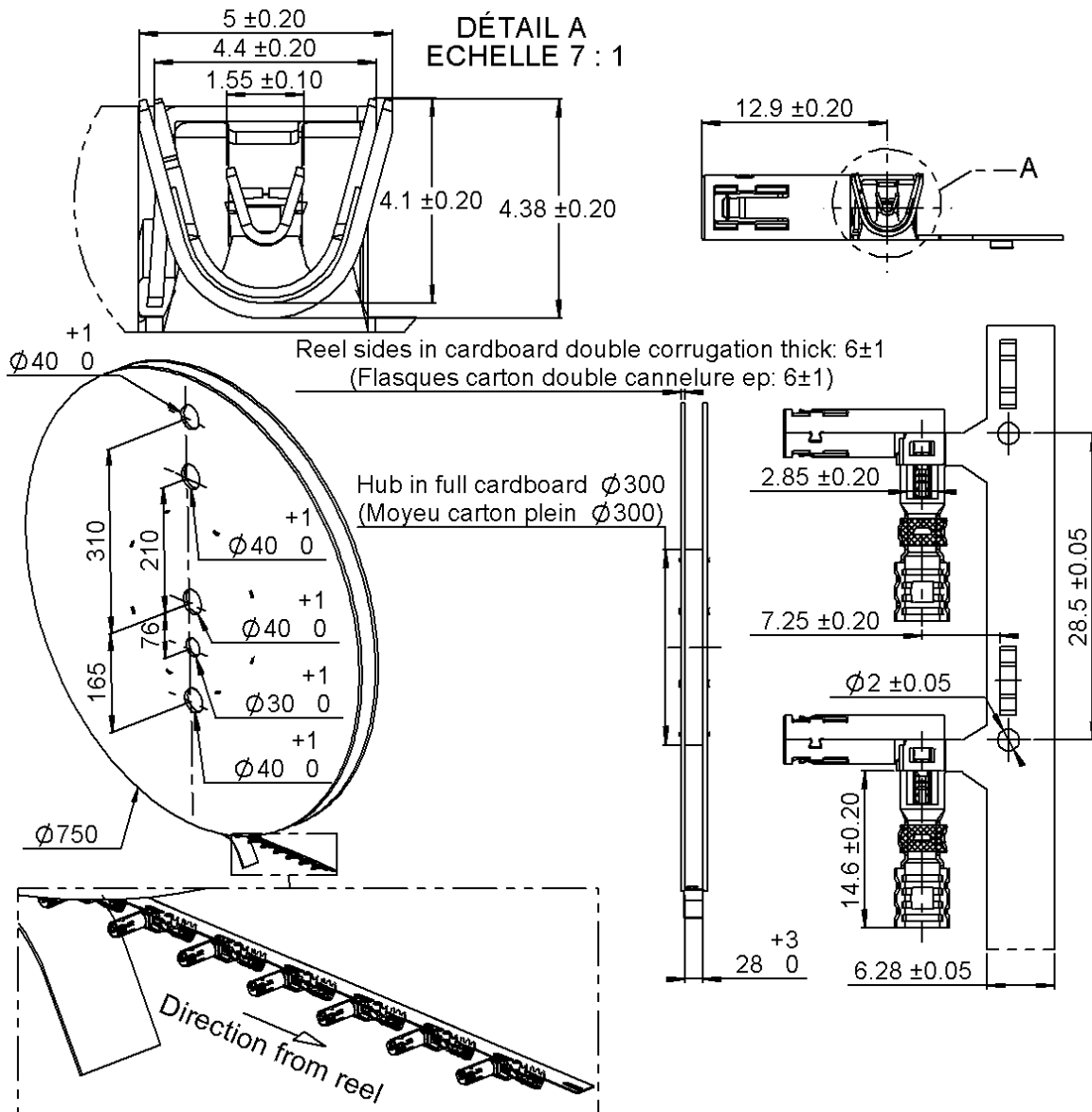


R/A R3C FEMALE COAX CAB 3.2/50

**R299.197.610**

CONDITIONNEMENT BOBINE 2000

STANDARD CABLE



All dimensions are in mm.

COMPONENTS	MATERIALS	UL CLASSIFICATION	COLOR
PLATING (µm)			
BODY			
CENTER CONTACT	BRONZE	TIN 3 OVER NICKEL 2	
OUTER CONTACT	BRONZE	SELECTIVE GOLD + SELECTIVE TIN	
INSULATOR	POLYMER	UL94-V0	NATURAL

**Standard Packaging : 2000 +/- 2%\***

\* Nota : possibility of having a maximum of five missing parts consecutively on the tape

Issue : 1408 C

In the effort to improve our products, we reserve the right to make changes judged to be necessary.



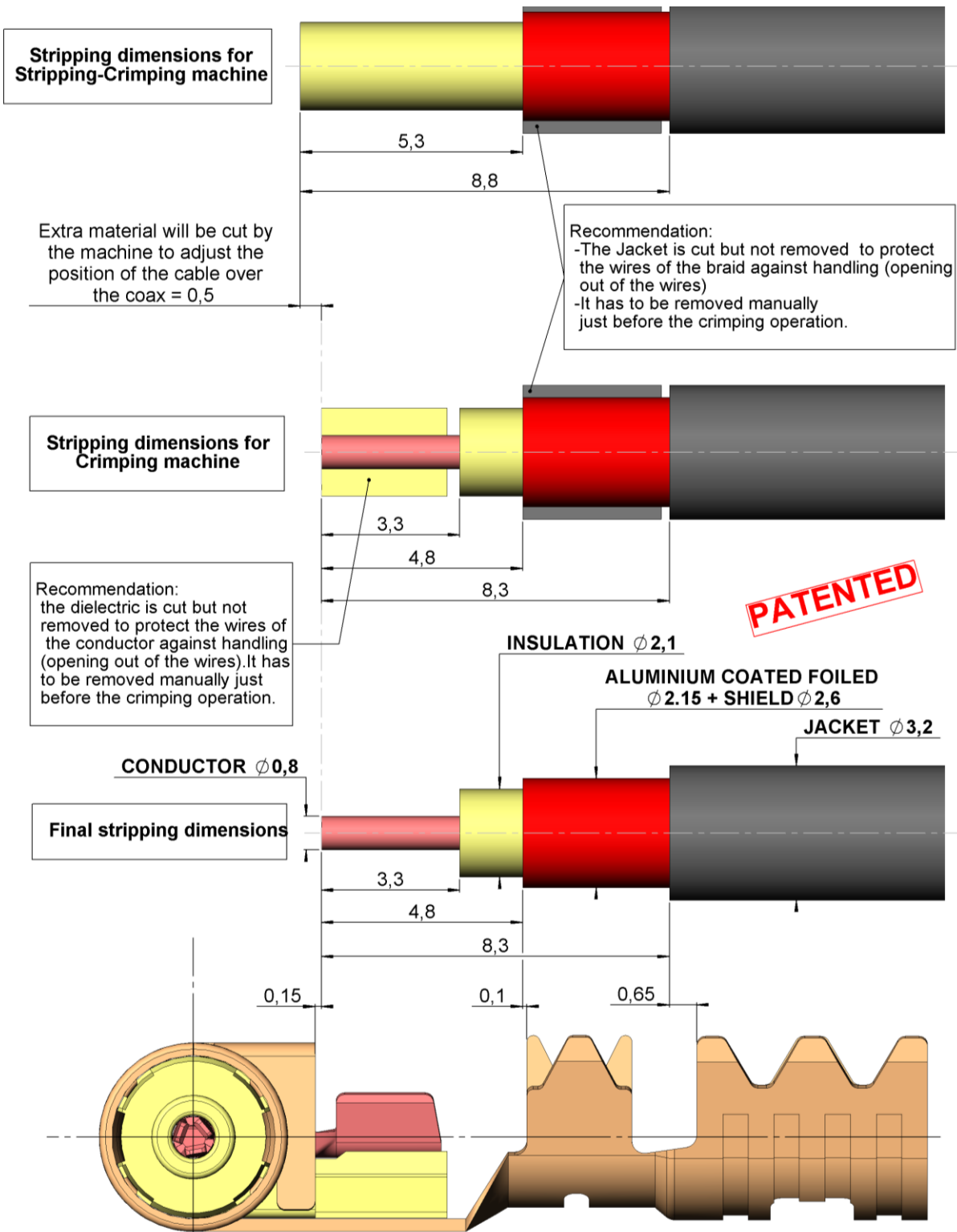
R/A R3C FEMALE COAX CAB 3.2/50

**R299.197.610**

CONDITIONNEMENT BOBINE 2000

STANDARD CABLE

**Recommended stripping dimensions of the RTK cable for right angle R3C female R299.197.610**



Issue : 1408 C

In the effort to improve our products, we reserve the right to make changes judged to be necessary.

R/A R3C FEMALE COAX CAB 3.2/50

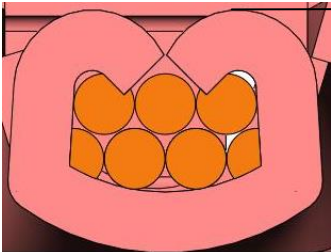
**R299.197.610**

CONDITIONNEMENT BOBINE 2000

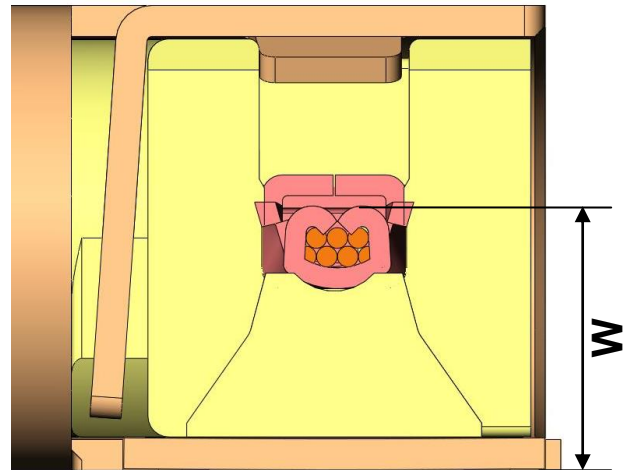
STANDARD CABLE

crimping height \*\*

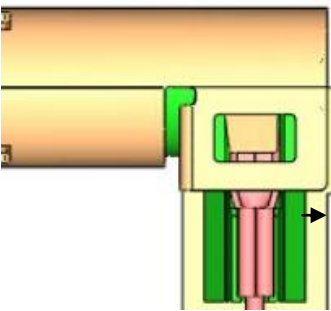
Conductor type	conductor/body W	Conductor X	braid Y	jacket Z
Stranded	2.5±0.05	1±0.05	2.85±0.05	3.44±0.04



X



W



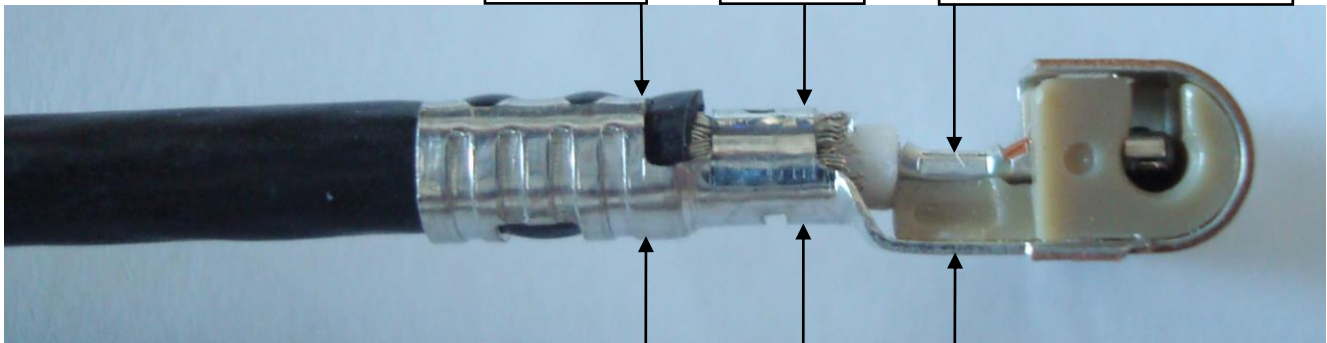
Length of the cutting tab (after crimping)

0.3 MAX

Jacket Z

Braid Y

Conductor/body W



Measure on the first teeth

Measure in this area because of the bottom hole

Measure on the middle of the contact

**\*\* CAUTION**

-Before using applicator, make sure the press is calibrated :135,8 mm from the lower dead point up to the base

-Crimping height may change depending on the manufacturer of the cable, for more informations please contact us

-We recommend to make electrical test after each set up of the applicator:

Outer and center contact continuity+Dielectric withstanding voltage 800Vrms, 50Hz  
Insulation resistance 1000 Mohms

Cable retention = 110Newton mini during 5 seconds with electrical continuity

Issue : 1408 C

In the effort to improve our products, we reserve the right to make changes judged to be necessary.