

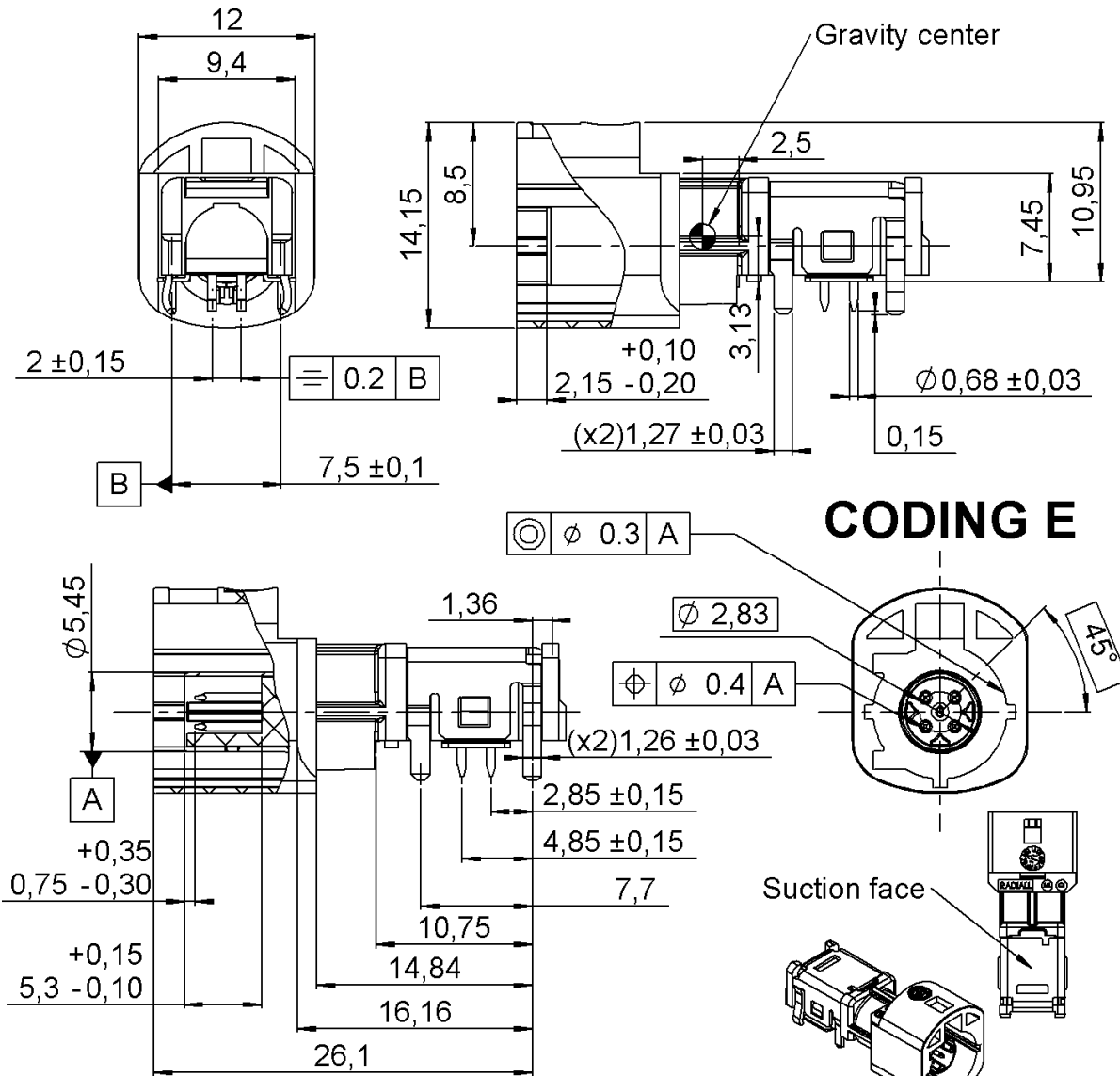
RIGHT ANGLE PIN IN PASTE RECEPTACLE

R299.197.E18

PACKAGING IN REEL OF 250

Series : LVDS

Product compatible to AK (German OEM Working Group) interface.
 Interface according PSA specification STE INTERFACE CONNECTIQUE 969079139A-date : 24/02/2009.
 Deviating from B61 section : dimension 6,9+/-0,6 will become 6,95+/-0,07.



General Tolerances : ±0.2

All dimensions are in mm.

COMPONENTS	MATERIALS	PLATING (µm)
BODY	BRASS	HIGH TEMPERATURE TIN OVER NICKEL 2
CENTER CONTACT	BRASS	SELECTIVE GOLD+ SELECTIVE TIN
OUTER CONTACT	BRASS	HIGH TEMPERATURE TIN OVER NICKEL 2
INSULATOR	-	-
GASKET	-	-
OTHERS PARTS	-	-
-	-	-
-	-	-
HOUSING	PA 4T 30%GF or PA 10T/X 30%GF	UL CLASSIFICATION COLOR
		UL 94 HB GREEN RAL 6002

Issue : 1405A

In the effort to improve our products, we reserve the right to make changes judged to be necessary.



RIGHT ANGLE PIN IN PASTE RECEPTACLE

R299.197.E18

PACKAGING IN REEL OF 250

Series : LVDS

PACKAGING

SPECIFICATION

Standard	Unit	Other
250	-	Contact us

ELECTRICAL CHARACTERISTICS

ENVIRONMENTAL

Impedance (1)	100 Ω
Frequency	0-2 GHz
VSWR (2)	TBD + 0,0000 x F(GHz) Maxi
Insertion loss	TBD √F(GHz) dB Maxi
RF leakage (3)	NA - F(GHz) dB Maxi
Voltage rating (4)	100 Veff Maxi
Dielectric withstanding voltage	250 Veff mini
Insulation resistance	5000 MΩ mini

Operating temperature	-40/+105 ° C
Hermetic seal	Atm.cm3/s
Panel leakage	

OTHER CHARACTERISTICS

Assembly instruction **NA**

Others :

MECHANICAL CHARACTERISTICS

Center contact retention	
Axial force – Mating end	5 N mini
Axial force – Opposite end	5 N mini
Torque	NA N.cm mini
Recommended torque	
Mating	NA N.cm
Panel nut	NA N.cm
Mating life	25 Cycles mini
Weight	4.00 g
PCB insertion force	15 N Max

- (1)Impedance, differential mode **100Ω**
- Return loss **-17dB** up to 1 Ghz
- (2)No relevant (compared to the PCB and the length of the cable assembly)
- (3) RF Leakage **≥ 75dB** up to 1GHz
- (4)Test voltage **250Vrms**
- Skew (between signal contacts) Not relevant because of the short electrical length of the receptacle compared to the length of the cable assembly
- Nearend-Crosstalk **< 30dB**
- Farend-crosstalk **< 35dB**
- Signal contact resistance **10mΩ**
(but not relevant because the contact is not elastic)
- Outer contact resistance **25mΩ**
(but not relevant because the contact is not elastic)
- Power current **1.5 A DC**
- RoHS compliant
- EMC-screening must be assured by chassis compartment. Control box manufacturer is responsible for EMC-screening.

CUSTOMER'S APPROVAL	
Department or company's stamp	
Name :	
Date :	
Copy to send back to RADIALL S.A. BEFORE :	14/02/2014

Issue : 1405A

In the effort to improve our products, we reserve the right to make changes judged to be necessary.

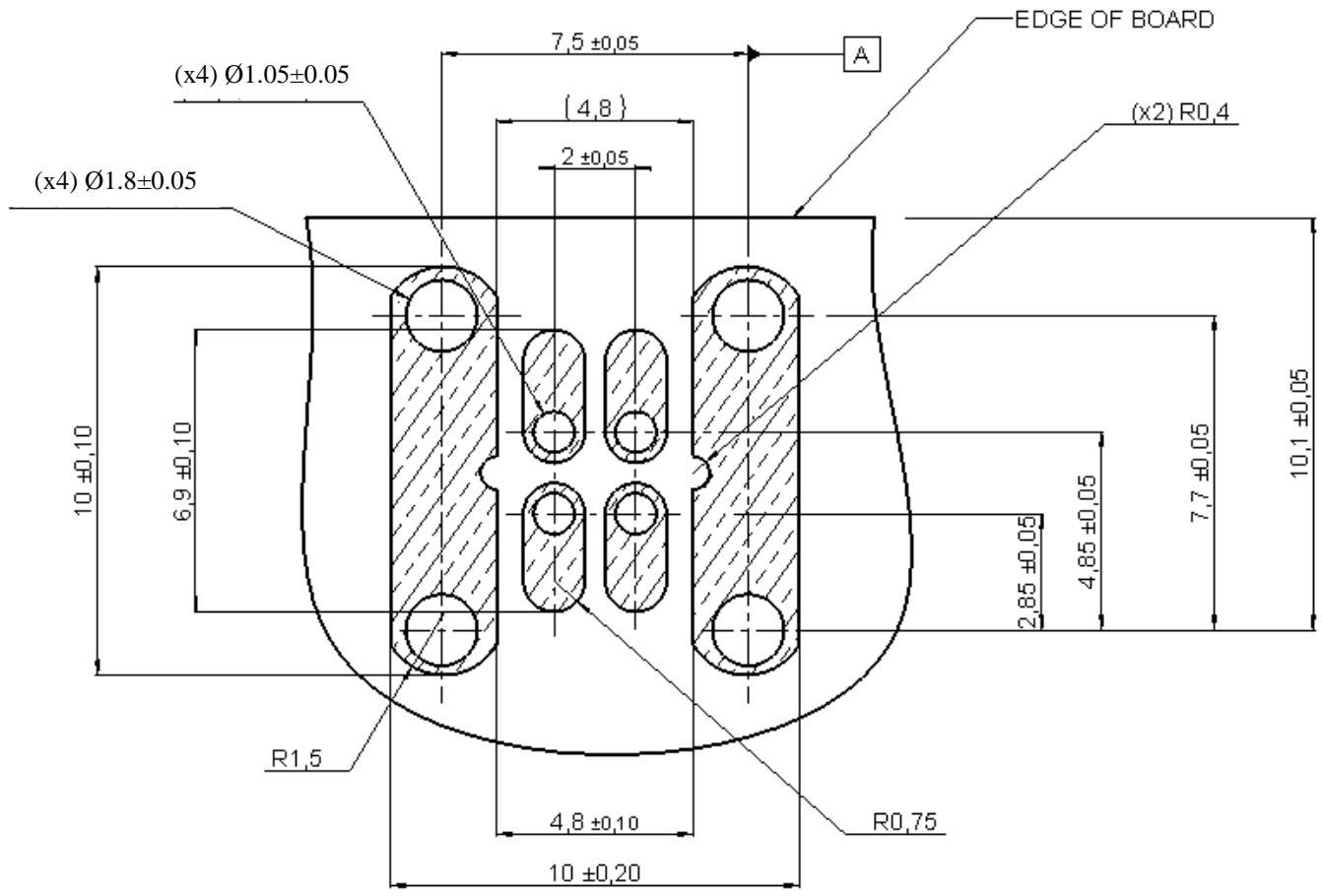
RIGHT ANGLE PIN IN PASTE RECEPTACLE

R299.197.E18

PACKAGING IN REEL OF 250

Series : LVDS

PCB LAYOUT



RECOMMENDED PCB LAYOUT

Thickness of PCB: 1,6 mm.

Material of PCB: FR4 (er = 4.6).

Solder paste has to be printed onto the land of solder and into holes to permit Pin In Hole Reflow

Issue : 1405A

In the effort to improve our products, we reserve the right to make changes judged to be necessary.

RIGHT ANGLE PIN IN PASTE RECEPTACLE

R299.197.E18

PACKAGING IN REEL OF 250

Series : LVDS

SOLDER PROCEDURE

- 1 - Deposit solder paste " Sn95.5Ag3.8Cu0.7 " on mounting zone by screen printing application. We recommend a low Residue Solid Flux. We advise a thickness of 0,2 millimetres min. (0,008 inch min.). The holes must be totally filled with cream. Verify that the edges of the zone are clean.
- 2 - Placement of the receptacle on the mounting zone with an automatic machine of "pick and place" type. Video camera is preferred to check the positioning of the component. Adhesive agents are forbidden on the receptacle.
- 3 - Soldering by reflow process. The typical profile to use is given below.
- 4 - Clean printed circuit boards.
- 5 - Check of solder joints and position of the component by visual inspection

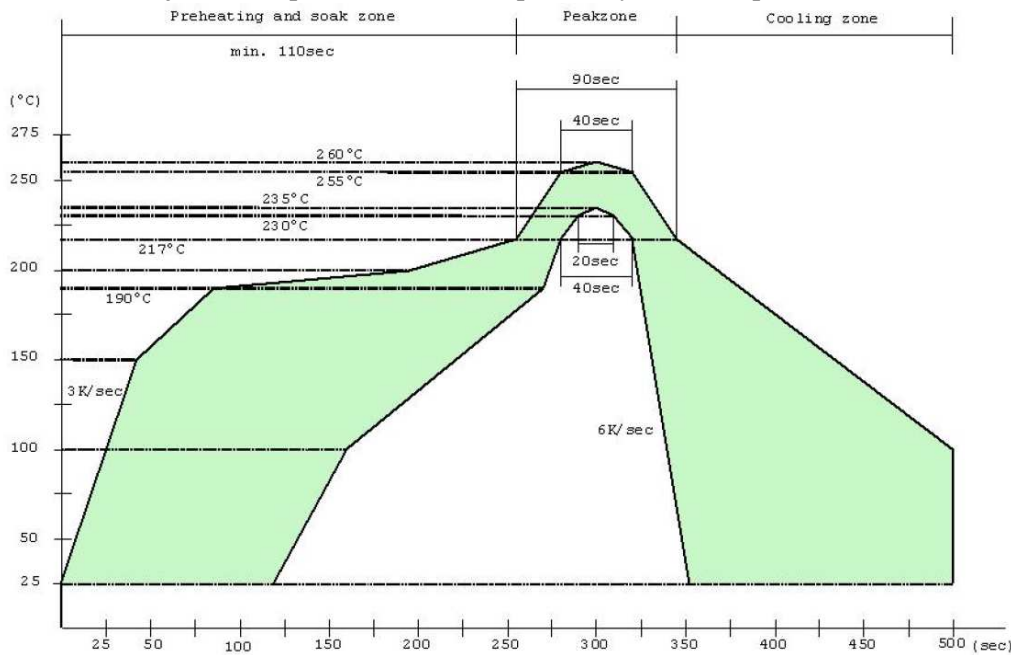


Table 1: Reflow profile

Profile feature	Alloy	
	SnPb eutectic or near eutectic solder	Pb-free solder (SnAgCu)
Ramp-Up Rate (measured over time of 10 s) starting between 50°C to 75°C depending of oven type (after entrance influences, the lower is the best)	3K/s maximum	3K/s maximum
Preheat (Flux dependant) * Temperature Min (T _{Smin}) Temperature Max (T _{Smax}) - Time (T _{Smin} to T _{Smax})	T min 100°C T max 150°C 60s ... 120s	T min 150°C T max 200°C 60s ... 120s
Peak Liquidus-Temperature (T _L) - Time over Liquidus (t _L) - Maximum Peak-Temperature (T _P) - Target Range - Minimum Peak-Temperature (T _{Pmin}) - Min Time at T _{Pmin} - 5°C - Max Time at T _{Pmax} - 5°C	183°C** 30s ... 100s 240°C *** 215°C - 225°C 205°C 20s at 200 °C or 10s at 205°C 30s at 235 °C	217°C** 30s ... 90s 280°C*** 237 - 245°C 235°C 20s at 230 °C 40s at 255 °C
Ramp-Down Rate (measured over time of 10s) ending at 120°C Time 50°C to Peak	From -0,5°C/s to -6°C/s *** 170s ... 240s	From -0,5°C/s to -6°C/s *** 180s ... 300s

Issue : 1405A

In the effort to improve our products, we reserve the right to make changes judged to be necessary.

RIGHT ANGLE PIN IN PASTE RECEPTACLE

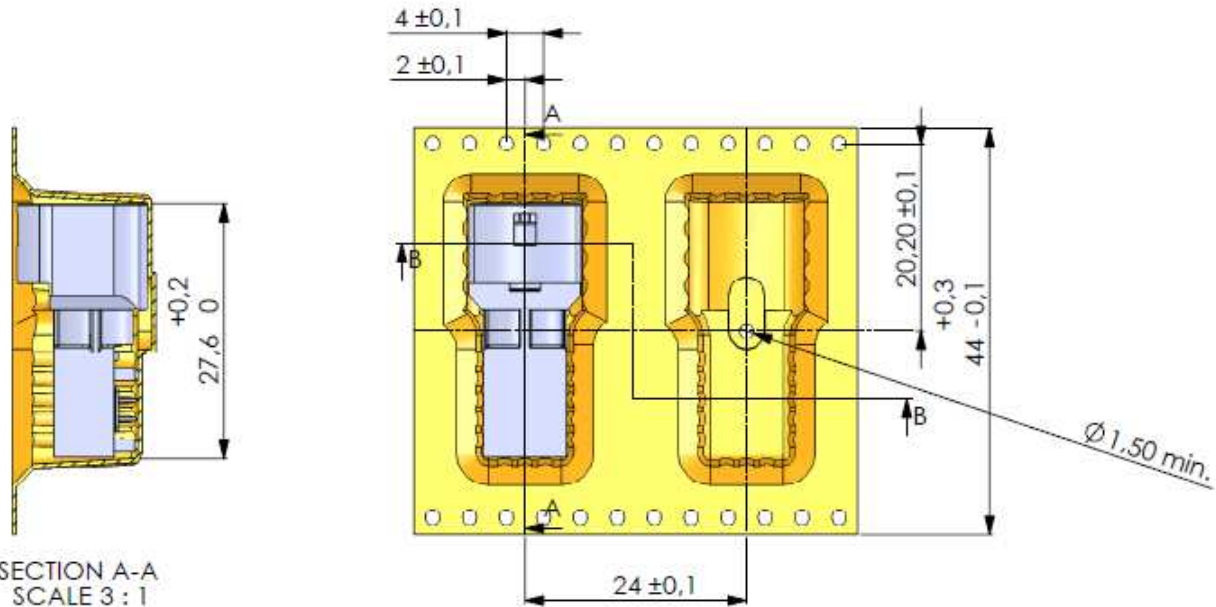
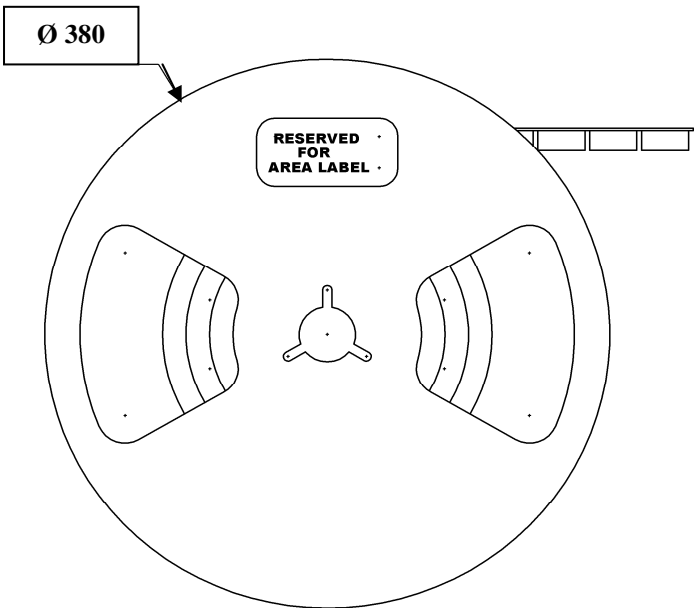
R299.197.E18

PACKAGING IN REEL OF 250

Series : LVDS

STANDARD PACKAGING

CELL MATERIAL :
ANTISTATIC
COVER TAPE MATERIAL :
polyester film tape



Issue : 1405A

In the effort to improve our products, we reserve the right to make changes judged to be necessary.

RIGHT ANGLE PIN IN PASTE RECEPTACLE**R299.197.E18****PACKAGING IN REEL OF 250**

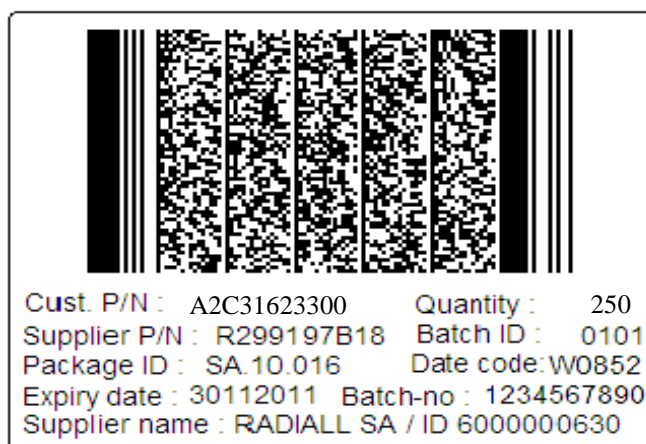
Series : LVDS

⇒ REELS:

Plastic reel

External dimensions : **Ø380 x 64 mm**Material : **Antistatic**Number of connectors per reel : **250**

(NO CONTRACTUAL PICTURE)

**Label for identification (coding B for example) :****Issue : 1405A**

In the effort to improve our products, we reserve the right to make changes judged to be necessary.

RAYDIALL
AUTOMOTIVE

RIGHT ANGLE PIN IN PASTE RECEPTACLE
PACKAGING IN REEL OF 250

R299.197.E18

Series : LVDS

⇒ CARDBOARD BOX:Inside dimensions : **390 x 390 x 210 mm**Outside dimensions : **440 x 435 x 225 mm**Number of reels per cardboard box : **4**Number of connectors per cardboard box : **1000**

(NO CONTRACTUAL PICTURE)

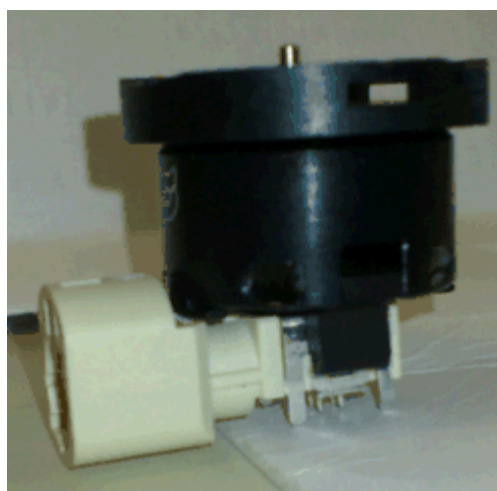
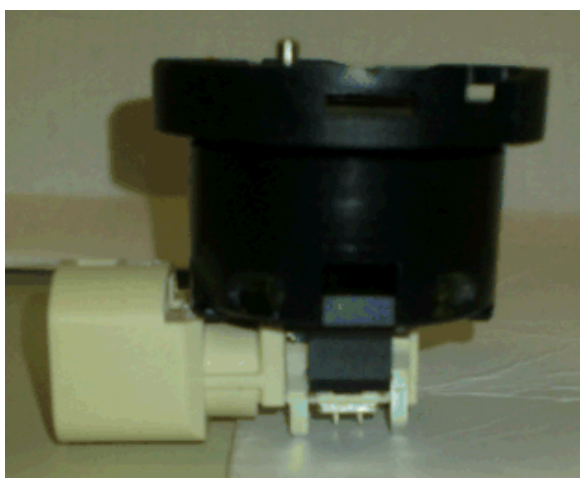
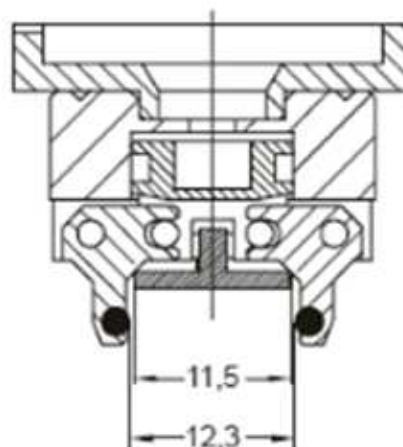
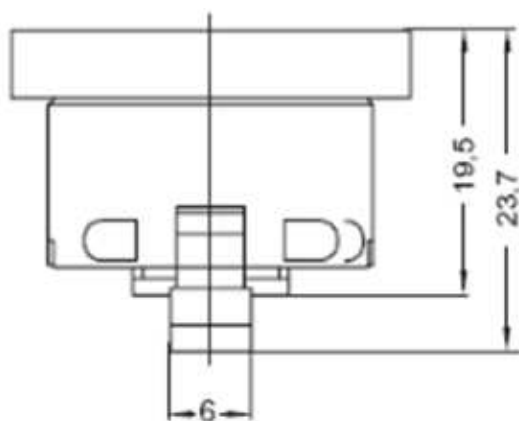
**Issue : 1405A**

In the effort to improve our products, we reserve the right to make changes judged to be necessary.

RAYDIALL
AUTOMOTIVE

RIGHT ANGLE PIN IN PASTE RECEPTACLE**R299.197.E18****PACKAGING IN REEL OF 250**

Series : LVDS

⇒ RECOMMENDED PICK AND PLACE HEAD:**Nozzle data Gripper for Pick & Place-Head SIPLACE:****Item Number : 00375345****Material : Vectra/steel****Handling with Nozzle Changer : Yes****Name (engl./dt.) : Nozzle Special vers. 4xx Gripper 12.3mm / Pipette
SOKO 4xx Aubengreifer 12.3mm/****Issue : 1405A**

In the effort to improve our products, we reserve the right to make changes judged to be necessary.

RAYDIAL
AUTOMOTIVE