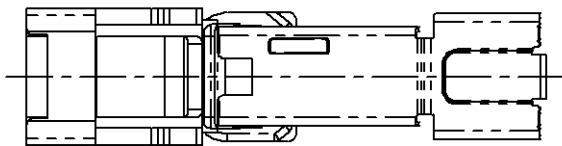
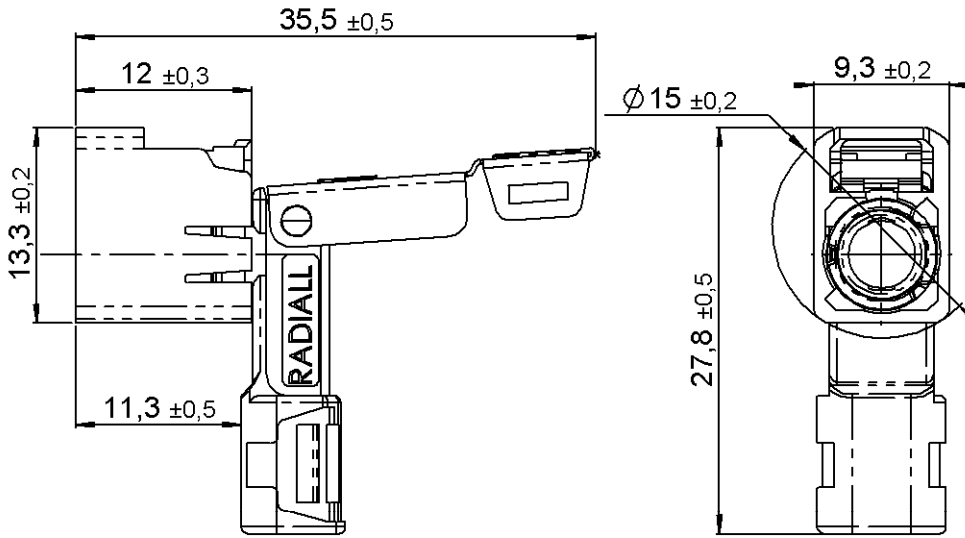


R/A R3C FEMALE HOUSING

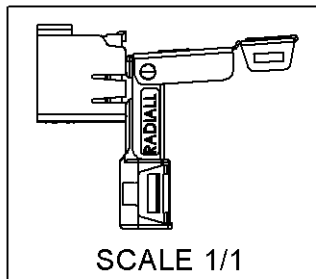
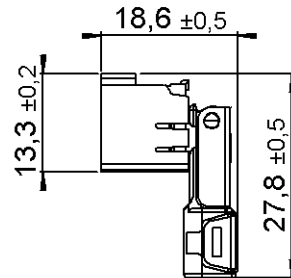
**R197.125.\_81**

**SMB CARLOCK**

To obtain the complet P/N please fill in the blank "\_" with the coding letter



For coding see page 2



Housing to be used with:  
-R299.197.630  
-R299.197.660

All dimensions are in mm.

COMPONENTS	MATERIALS	PLATING	(µm)
		UL CLASSIFICATION	COLOR
HOUSING	PA6.6 GF15 (POLYAMIDE)	UL 94 V-2	See Page2
CAP	INOX	Chromatation	
SLEEVE	DIE CAST		

**PACKAGING**

Standard	Other
1000 (G10L standard cardbox)	Contact us

**MECHANICAL CHARACTERISTICS**

**ENVIRONMENTAL**

Mating life            25 Cycles mini  
Weight                 4,85 g

Operating temperature    -40/+110 ° C

Issue : 1125 A

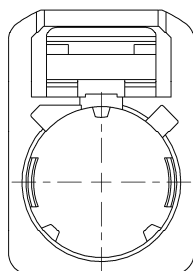
In the effort to improve our products, we reserve the right to make changes judged to be necessary.



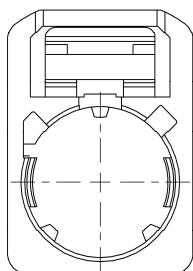
**R/A R3C FEMALE HOUSING**

**R197.125.\_81**

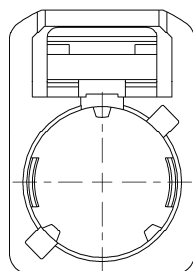
**SMB CARLOCK**



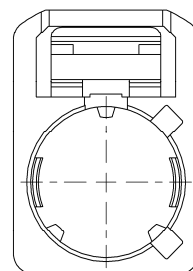
**CODING A**  
COLOR BLACK  
RAL9005



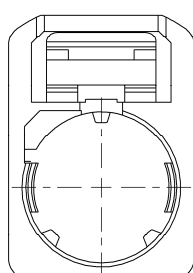
**CODING B**  
COLOR WHITE  
RAL9001



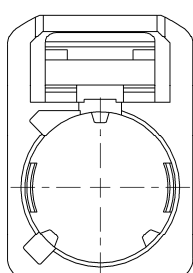
**CODING C**  
COLOR BLUE  
RAL5005



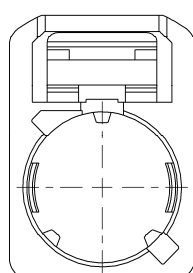
**CODING D**  
COLOR CLARET VIOLET  
RAL4004



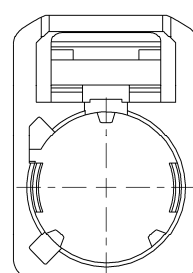
**CODING E**  
COLOR GREEN  
RAL6002



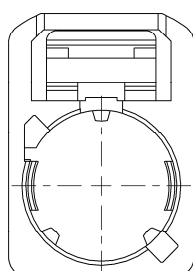
**CODING F**  
COLOR BROWN  
RAL8011



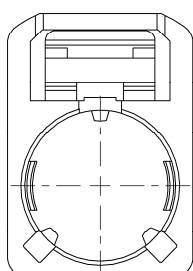
**CODING G**  
COLOR GREY  
RAL7031



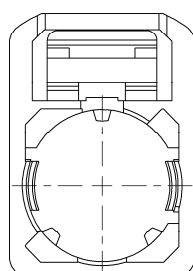
**CODING H**  
COLOR VIOLET  
RAL4003



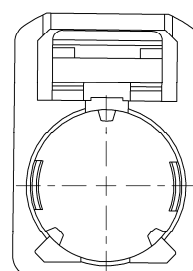
**CODING I**  
COLOR BEIGE  
RAL1001



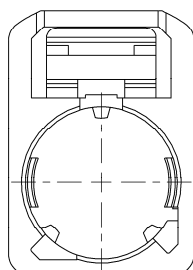
**CODING K**  
COLOR CURRY  
RAL1027



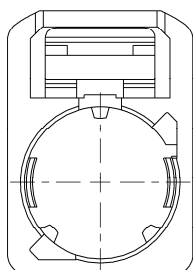
**CODING L**  
COLOR CARMINE RED  
RAL3002



**CODING M**  
COLOR PASTEL ORANGE  
RAL2003



**CODING N**  
COLOR PASTEL GREEN  
RAL6019



**CODING Z**  
COLOR WATER BLUE  
RAL5021

**To obtain the complete P/N please fill in the blank "\_ " with the coding letter**

**Issue :** 1125 A

In the effort to improve our products, we reserve the right to make changes judged to be necessary.



R/A R3C FEMALE HOUSING

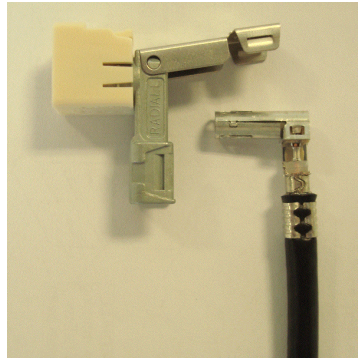
**R197.125.\_81**

SMB CARLOCK

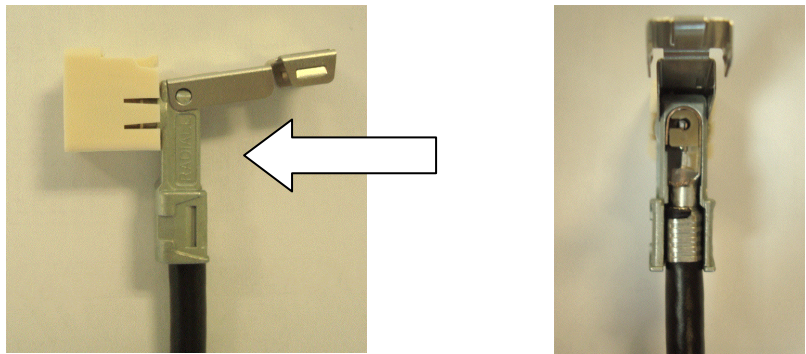
**RECOMMENDED MOUNTING PROCEDURE**

1

• Aligned the R/A coax with the sub-assembly

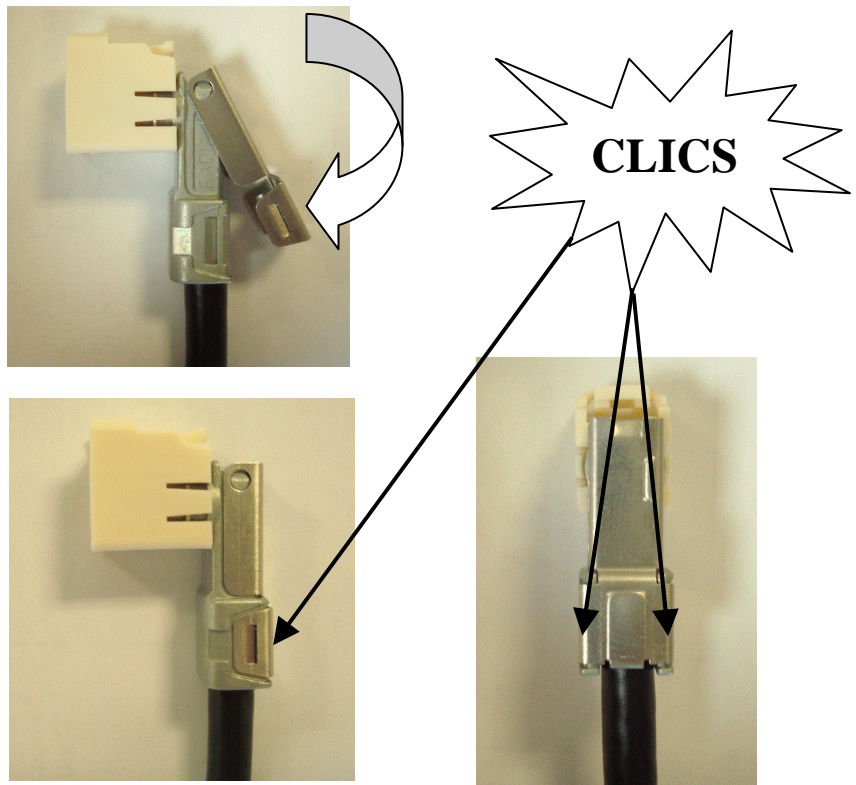


• Push the terminal into the sub-assembly



2

• fold down the cap onto the sleeve and push it until the click



Issue : 1125 A

In the effort to improve our products, we reserve the right to make changes judged to be necessary.