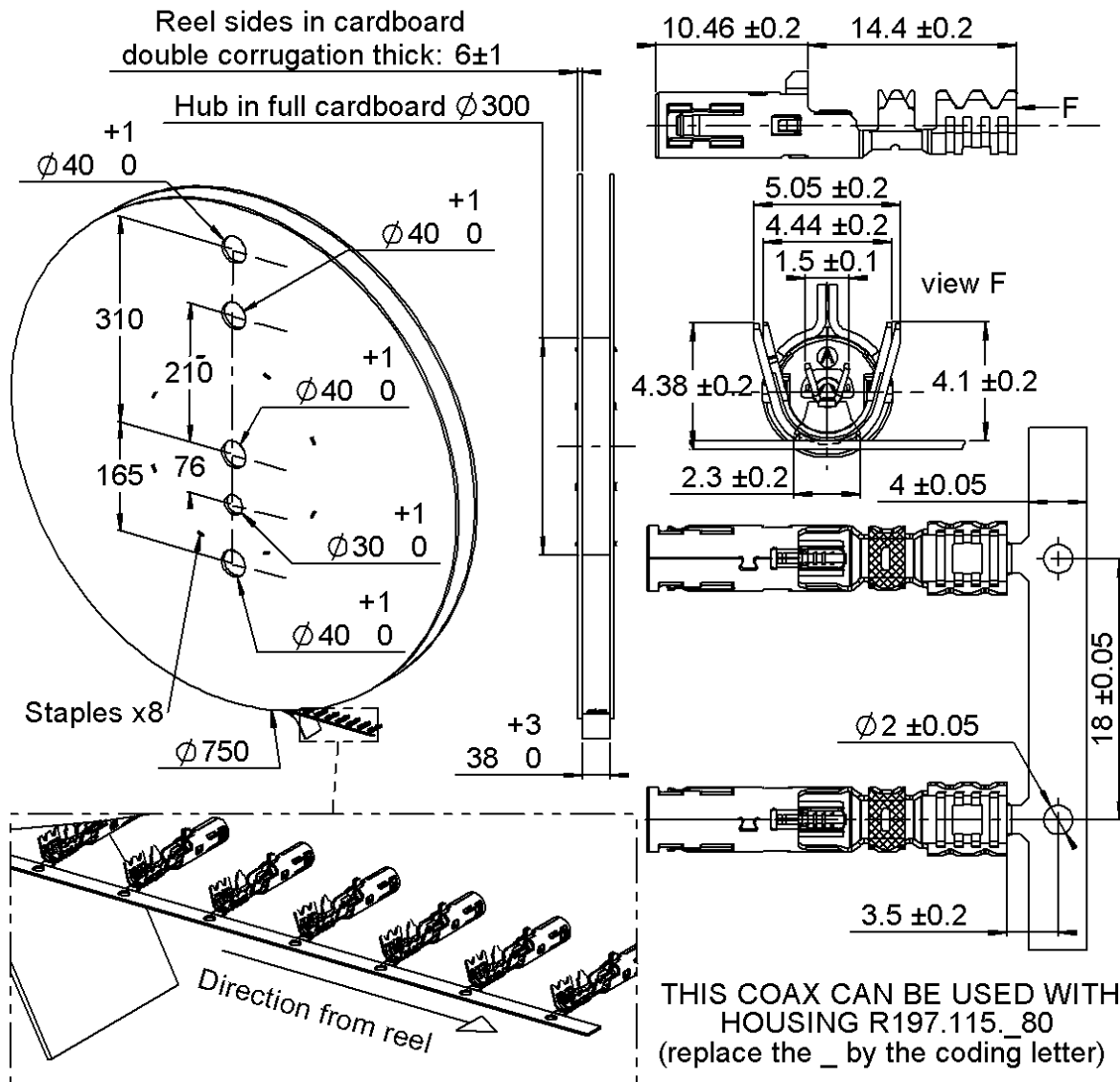


**R3C FEMALE COAX CAB 3.2/50**

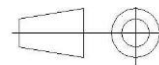
**PACKAGING REEL 3000**

**R299.197.210**

**STANDARD CABLE**



All dimensions are in mm.



COMPONENTS	MATERIALS	PLATING (µm)	
BODY	BRONZE	TIN 3 OVER NICKEL 2	
CENTER CONTACT	BRONZE	SELECTIVE GOLD+ SELECTIVE TIN	
OUTER CONTACT	-	UL CLASSIFICATION	COLOR
INSULATOR	POLYMER	UL94-V0	NATURAL
	-		

**Standard Packaging : 3000+/-2%\***

\* Nota : possibility of having a maximum of five missing parts consecutively on the tape

Issue : 1408 B

In the effort to improve our products, we reserve the right to make changes judged to be necessary.



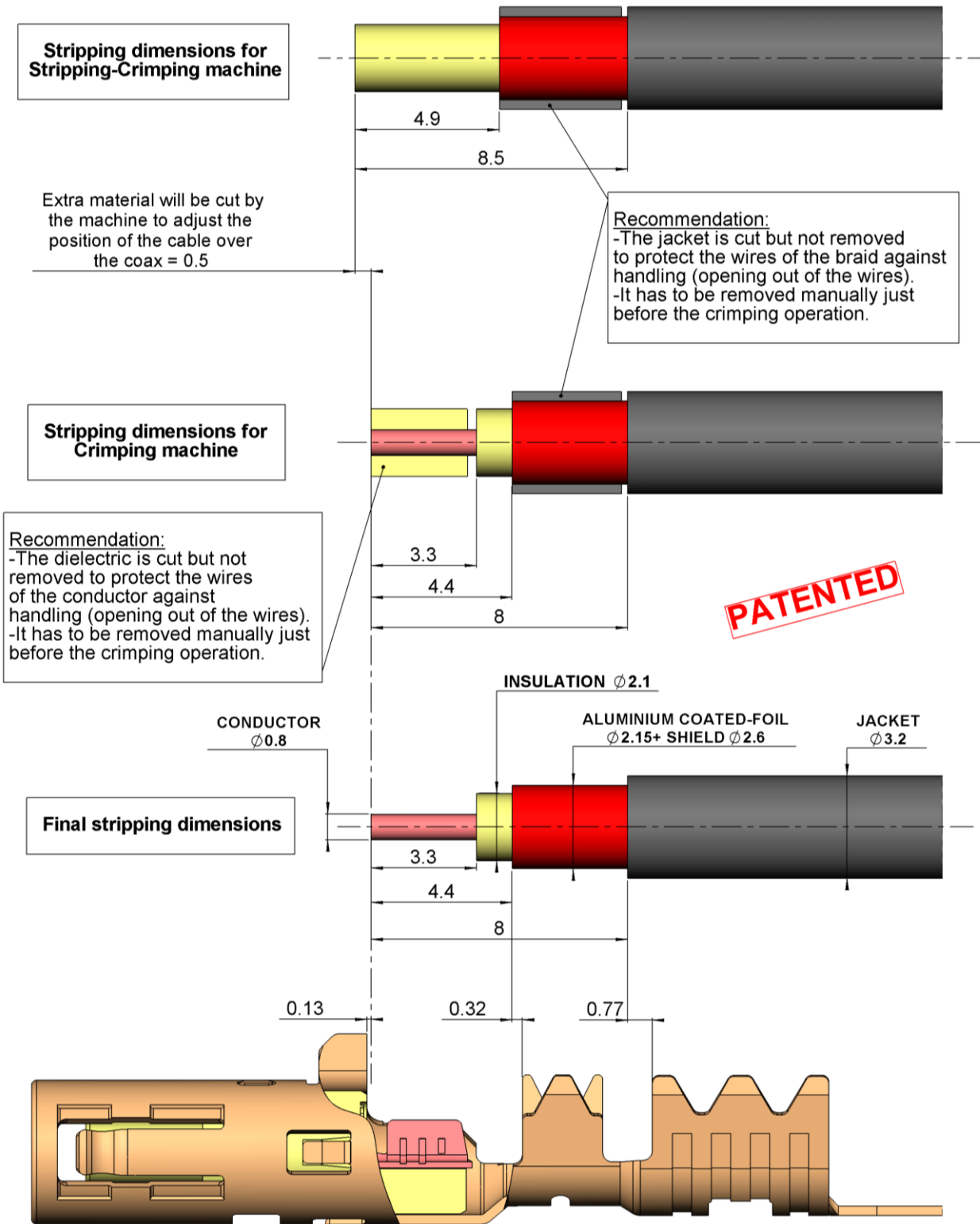
R3C FEMALE COAX CAB 3.2/50

**R299.197.210**

PACKAGING REEL 3000

STANDARD CABLE

**Recommended stripping dimensions of the RTK cable for R3C female R299.197.210**



Issue : 1408 B

In the effort to improve our products, we reserve the right to make changes judged to be necessary.

**R3C FEMALE COAX CAB 3.2/50**

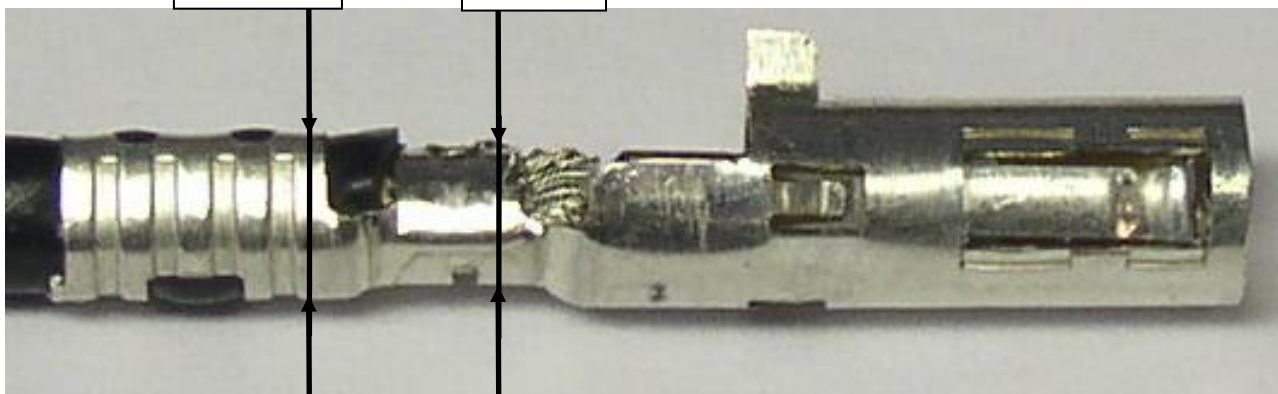
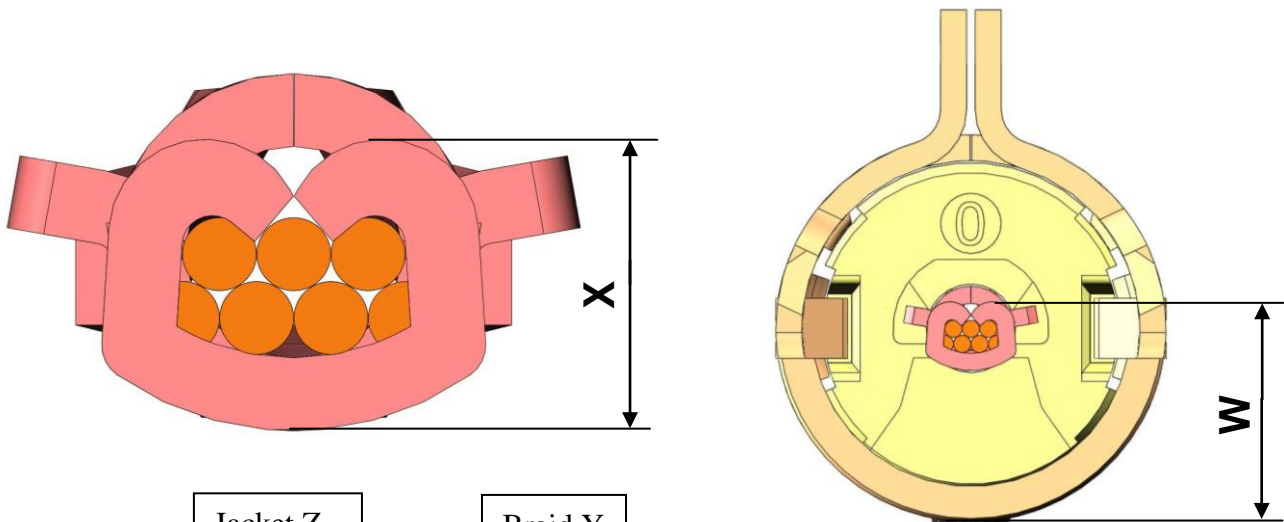
**PACKAGING REEL 3000**

**R299.197.210**

**STANDARD CABLE**

crimping height \*\*

Conductor type	conductor/body W	Conductor X	braid Y	jacket Z
stranded	2.5±0.05	1±0.05	2.85±0.05	3.44±0.04



Measure on first teeth

Measure in this area because of the bottom hole

**\*\* CAUTION**

- Before using applicator, make sure the press is calibrated :135,8 mm from the lower dead point up to the base
- Crimping height may change depending on the manufacturer of the cable, for more informations please contact us
- We recommend to make electrical test after each set up of the applicator:
  - Outer and center contact continuity+Dielectric withstanding voltage 800Vrms, 50Hz
  - Insulation resistance 1000 Mohms
  - Cable retention = 110Newton mini during 5 seconds with electrical continuity

Issue : 1408 B

In the effort to improve our products, we reserve the right to make changes judged to be necessary.

