

**FERRULE R3C CABLE 2.6/50 & 3.2/50**

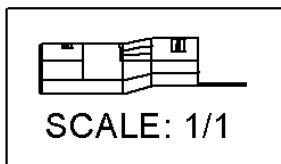
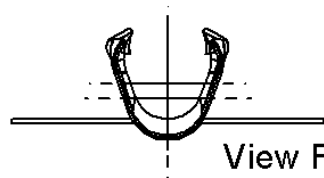
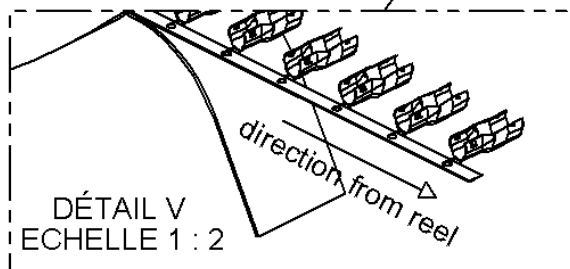
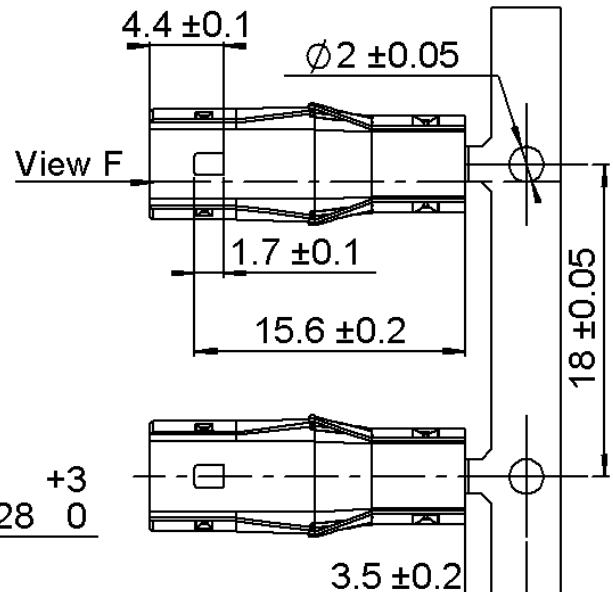
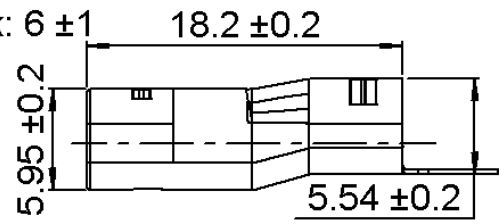
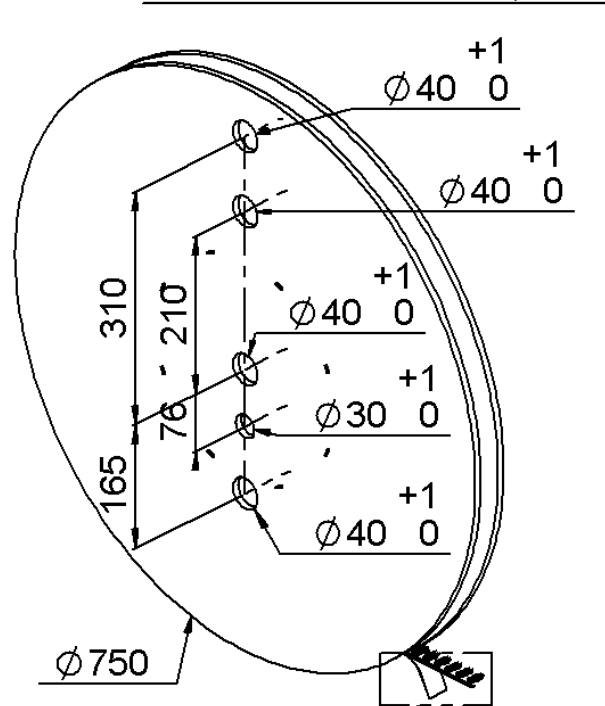
**R299.197.900**

**PACKAGING REEL 2500**

Series : **ACCESSORY**

Reel sides in cardboard double corrugation thick:  $6 \pm 1$

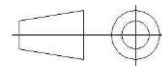
Hub in full cardboard  $\phi 300$



These ferule could be used with terminal:

- R299.197.000/R299.197.200
- R299.197.010/R299.197.210

All dimensions are in mm.



COMPONENTS	MATERIALS	PLATING ( $\mu\text{m}$ )
SLEEVE	BRASS	TIN 3 OVER NICKEL 2

Standard Packaging : 2500+/-2%

Issue : 1425 A

In the effort to improve our products, we reserve the right to make changes judged to be necessary.



**FERRULE R3C CABLE 2.6/50 & 3.2/50**

**R299.197.900**

**PACKAGING REEL 2500**

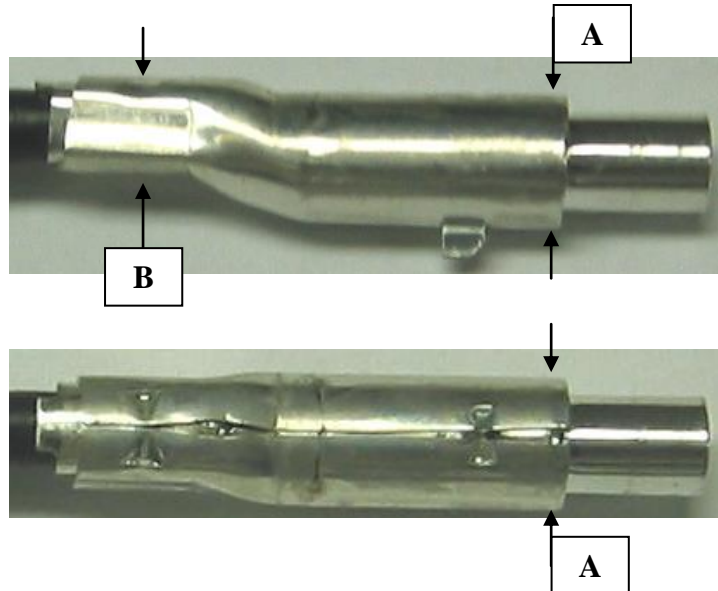
Series : **ACCESSORY**

Male crimping height		
Cable	Back side B	Interface A
2.6/50	3,6±0,05	Ø 5±0,05
3.2/50	3,95±0,05	Ø 5±0,05

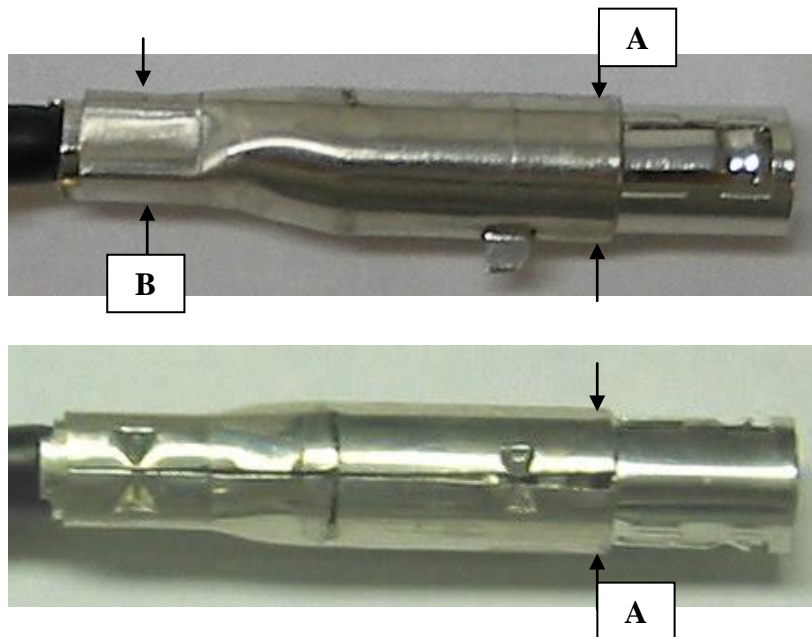
**NOTA**

The height of the crimping B must be controlled in the middle of the area of the harpoons

The crimping diameter A must be controlled at the extremity of the sleeve, and on 2 directions to check the cylindricity.



Female crimping height		
Cable	Interface A	Back side B
2.6/50	3,5±0,05	Ø 5±0,05
3.2/50	3,95±0,05	Ø 5±0,05



Issue : 1425 A

In the effort to improve our products, we reserve the right to make changes judged to be necessary.