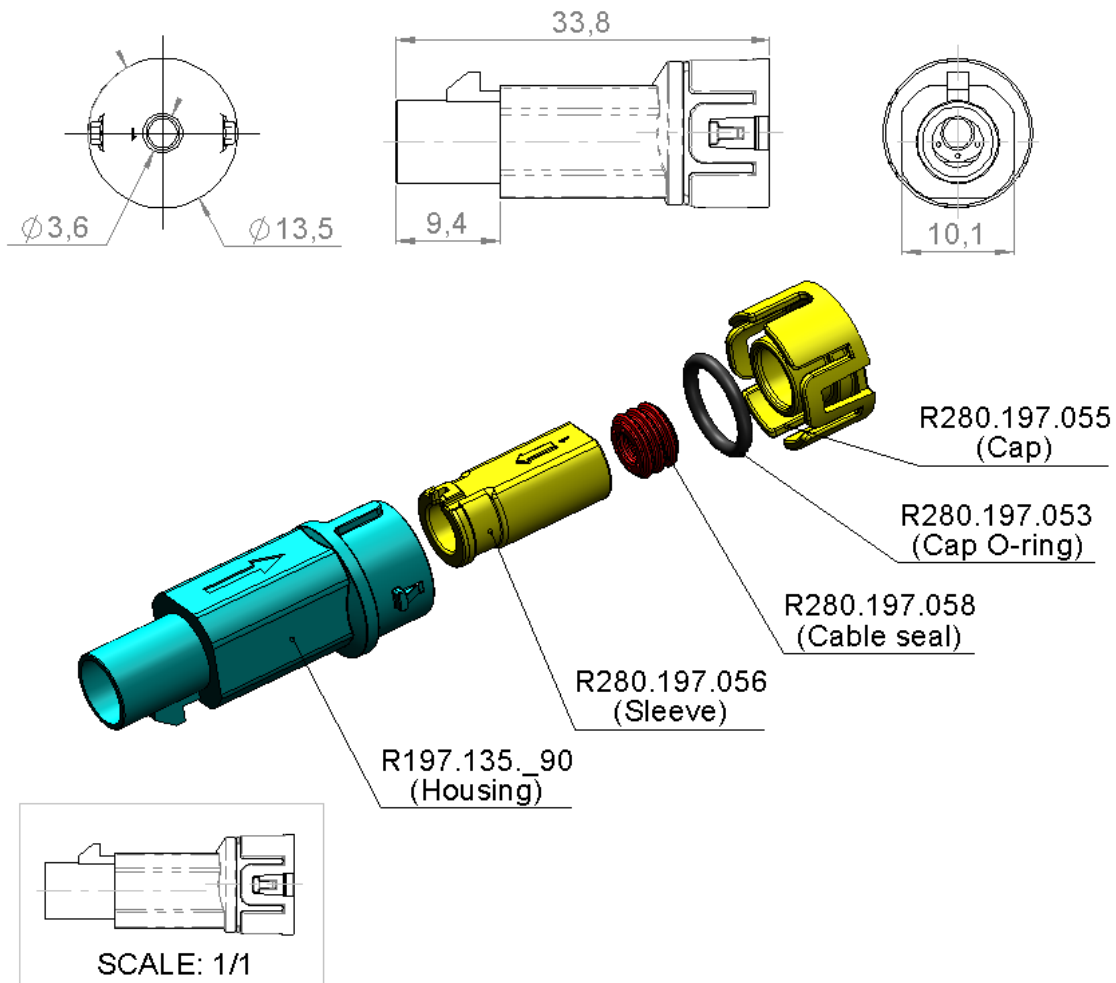


**WATERPROOF R3C MALE**

**2.6/50S CABLE**

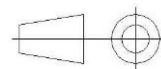
**R197.135.\_11**

Series : **SMB CARLOCK**



To obtain the complete P/N please fill in the blank "\_" with the coding letter  
Coding Z is shown for information

All dimensions are in mm.



COMPONENTS	MATERIALS	UL CLASSIFICATION	COLOR	PACKAGING
HOUSING	POLYAMIDE	UL 94 V-2	See Page2	In bulk on cardbox / Qty:3000
SLEEVE	POLYAMIDE	UL 94 V-2	YELLOW	In bulk on plastic bag / Qty:16000
CABLE SEAL	SILICON		RED	In bulk on plastic bag / Qty:50000
CAP O-RING	HNBR		BLACK	In bulk on plastic bag / Qty:24000
CAP	POLYAMIDE	UL 94 V-2	YELLOW	In bulk on plastic bag / Qty:14000

**MECHANICAL CHARACTERISTICS**

Mating life **50 Cycles mini**  
Weight **2.62 g**

**ENVIRONMENTAL**

Operating temperature **-40/+105 ° C**  
Waterproof level **IP67**

**Note: IP67 guaranteed with connector R299.197.000 and RG174 cable only. Waterproof only guaranteed with a waterproof Jack.**

Issue : 1630A

In the effort to improve our products, we reserve the right to make changes judged to be necessary.

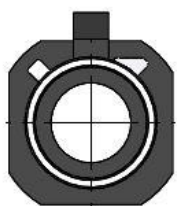
**WATERPROOF R3C MALE**

**2.6/50S CABLE**

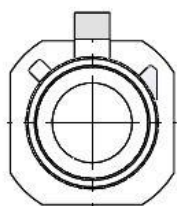
**R197.135.\_11**

Series : **SMB CARLOCK**

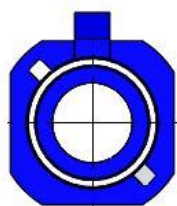
-To obtain the complete P/N please fill in the blank " \_ " with the coding letter



**A**



**B**



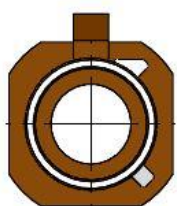
**C**



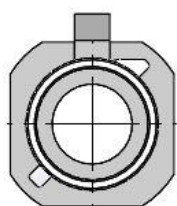
**D**



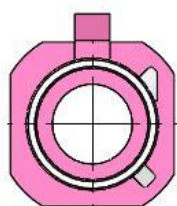
**E**



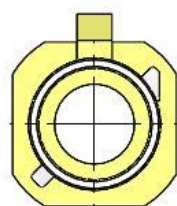
**F**



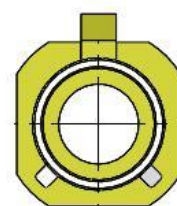
**G**



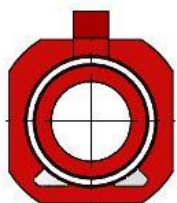
**H**



**I**



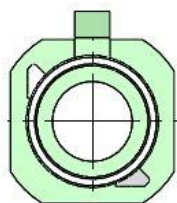
**K**



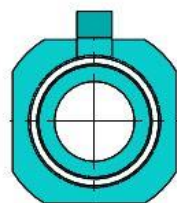
**L**



**M**



**N**



**Z**

CODING	REFERENCE	COLOR	RAL
<b>A</b>	<b>R197.135.A11</b>	<b>BLACK</b>	<b>9005</b>
<b>B</b>	<b>R197.135.B11</b>	<b>CREAM WHITE</b>	<b>9001</b>
<b>C</b>	<b>R197.135.C11</b>	<b>BLUE</b>	<b>5005</b>
<b>D</b>	<b>R197.135.D11</b>	<b>BORDEAUX</b>	<b>4004</b>
<b>E</b>	<b>R197.135.E11</b>	<b>GREEN</b>	<b>6002</b>
<b>F</b>	<b>R197.135.F11</b>	<b>BROWN</b>	<b>8011</b>
<b>G</b>	<i>R197.135.G11</i>	<i>GREY</i>	<i>7031</i>
<b>H</b>	<b>R197.135.H11</b>	<b>VIOLET</b>	<b>4003</b>
<b>I</b>	<i>R197.135.I11</i>	<i>BEIGE</i>	<i>1001</i>
<b>K</b>	<b>R197.135.K11</b>	<b>CURRY</b>	<b>1027</b>
<b>L</b>	<i>R197.135.L11</i>	<i>CARMIN</i>	<i>3002</i>
<b>M</b>	<i>R197.135.M11</i>	<i>PASTEL ORANGE</i>	<i>2003</i>
<b>N</b>	<i>R197.135.N11</i>	<i>PASTEL GREEN</i>	<i>6019</i>
<b>Z</b>	<i>R197.135.Z11</i>	<i>WATER BLUE</i>	<i>5021</i>

Note: coding references in bold are available, other coding must be developed.

Issue : 1630A

In the effort to improve our products, we reserve the right to make changes judged to be necessary.

**WATERPROOF R3C MALE**

**2.6/50S CABLE**

**R197.135.\_11**

Series : **SMB CARLOCK**

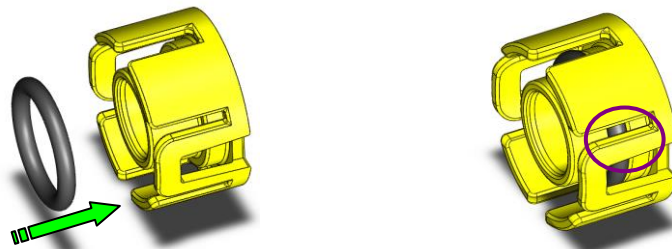
**-Storage condition:** components should be stored indoors, in its original packaging (box + plastic bag), in a controlled climate environment not exceeding -20°C/+40°C and 60% relative humidity. Components should be protected from direct sunlight and should be used on a "first-in, first-out" basis.

**-Shelf Life:** it is recommended that housing be used within 1 year from the date of manufacture when stored according to the recommended storage condition.

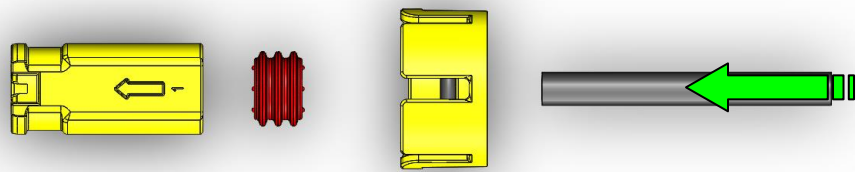
**RECOMMENDED MOUNTING PROCEDURE**

**Note: Before assembly, verify that the cable o-ring is not damaged or cutted.**

**1** Insert the cap o-ring onto the cap until is in contact at the bottom of the cap.

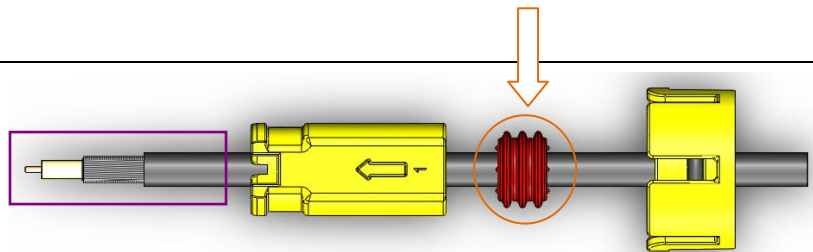


**2** Insert the cable (Ø3.0max) through the cap, the cable seal and the sleeve.

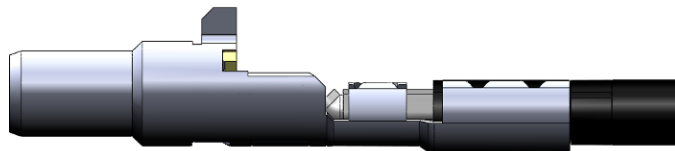


**Note : after insertion of the components, do not insert the cable seal inside the cap before R3C crimping**

**3** Strip the cable according the R3C recommendations.



**4** Crimp the R3C male connector onto the cable.



PROHIBITED

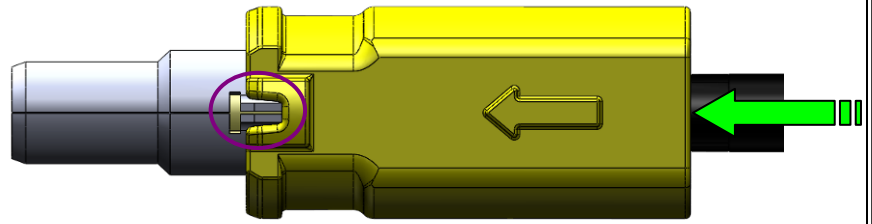
**WATERPROOF R3C MALE**

**2.6/50S CABLE**

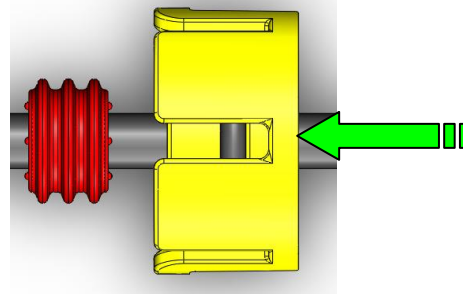
**R197.135.\_11**

Series : SMB CARLOCK

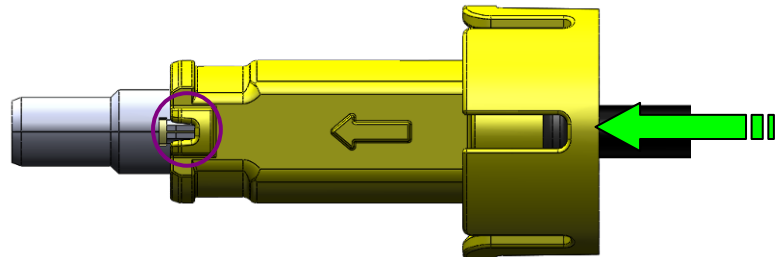
**5**  
**Push the sleeve until the tab of the connector is inside the slot of the sleeve.**



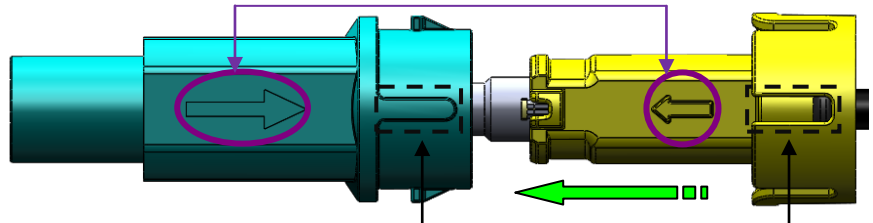
**6**  
**Push the cap to insert the cable seal inside it. Verify that the cable o-ring was not damaged during stripping and crimping operations.**



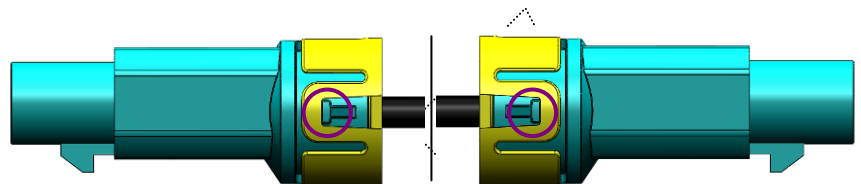
**7**  
**Push the cap with the cable seal, until the cap is in contact with the sleeve.**



**8**  
**Aligned the arrow of the sleeve with the arrow of the housing, and the slots of the cap with ribs of the housing.**



**9**  
**Then insert the connector with the sleeve and the cap into the housing until the cap is locked onto the housing (each side).**



Issue : 1630A

In the effort to improve our products, we reserve the right to make changes judged to be necessary.

PROHIBITION