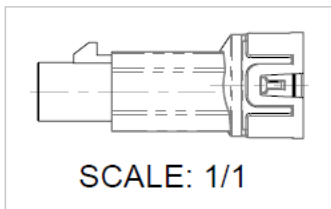
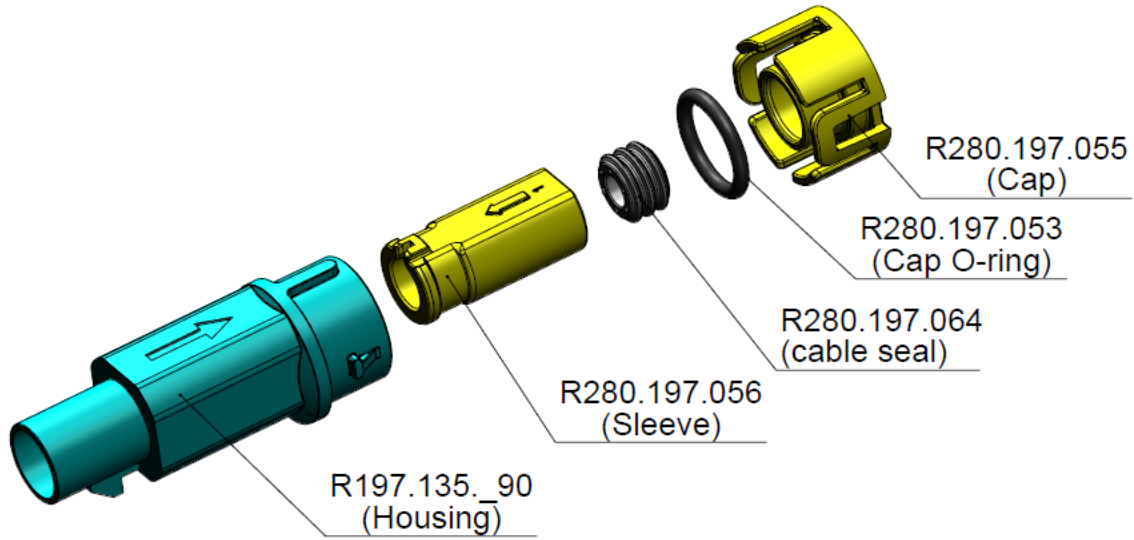
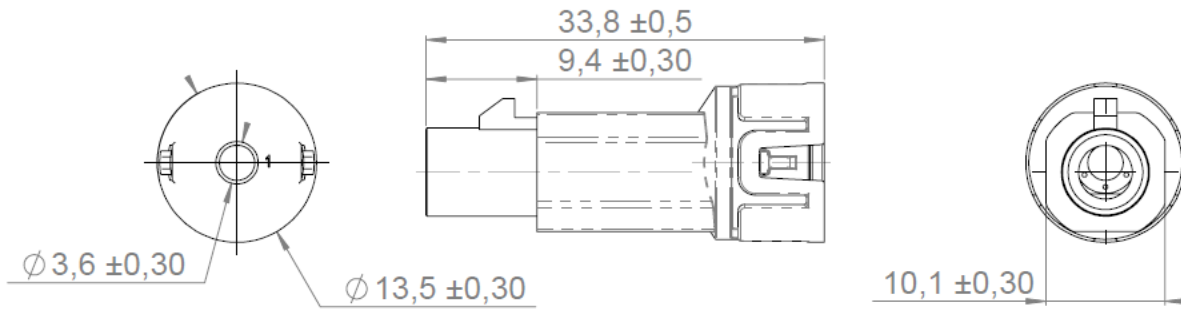


WATERPROOF R3C MALE

3.2/50S CABLE

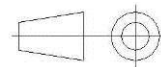
R197.135._12

Series : **SMB CARLOCK**



To obtain the complete P/N please fill in the blank "_" with the coding letter
Coding Z is shown for information

All dimensions are in mm.



COMPONENTS	MATERIALS	UL CLASSIFICATION	COLOR	PACKAGING
HOUSING	POLYAMIDE	UL 94 V-2	See Page2	In bulk on cardbox / Qty:3000
SLEEVE	POLYAMIDE	UL 94 V-2	YELLOW	In bulk on plastic bag / Qty:16000
CABLE SEAL	SILICONE		GREY	In bulk on plastic bag / Qty:10000
CAP O-RING	HNBR		BLACK	In bulk on plastic bag / Qty:24000
CAP	POLYAMIDE	UL 94 V-2	YELLOW	In bulk on plastic bag / Qty:14000

MECHANICAL CHARACTERISTICS

Mating life **50** Cycles mini
Weight **2.45** g

ENVIRONMENTAL

Operating temperature **-40/+105** ° C
Waterproof level **IP67**

**Note: IP67 guaranteed with connector R299.197.010 and RTK Gebauer & Griller K2670 cable only.
Waterproof only guaranteed with a waterproof Jack.**

Issue : 1705 B

In the effort to improve our products, we reserve the right to make changes judged to be necessary.



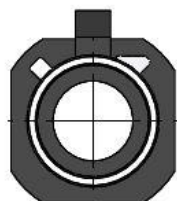
WATERPROOF R3C MALE

3.2/50S CABLE

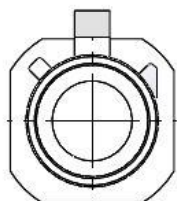
R197.135._12

Series : SMB CARLOCK

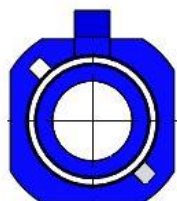
-To obtain the complete P/N please fill in the blank "_ " with the coding letter



A



B



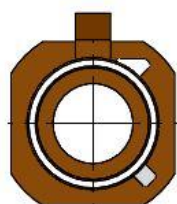
C



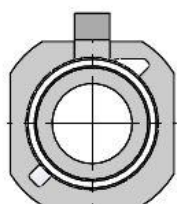
D



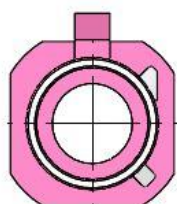
E



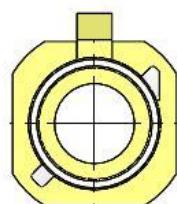
F



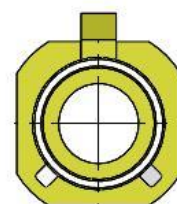
G



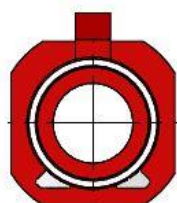
H



I



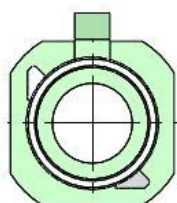
K



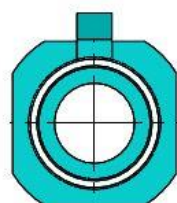
L



M



N



Z

CODING	REFERENCE	COLOR	RAL
A	R197.135.A12	BLACK	9005
B	R197.135.B12	CREAM WHITE	9001
C	R197.135.C12	BLUE	5005
D	R197.135.D12	BORDEAUX	4004
E	R197.135.E12	GREEN	6002
F	R197.135.F12	BROWN	8011
<i>G</i>	<i>R197.135.G12</i>	<i>GREY</i>	<i>7031</i>
H	R197.135.H12	VIOLET	4003
<i>I</i>	<i>R197.135.I12</i>	<i>BEIGE</i>	<i>1001</i>
K	R197.135.K12	CURRY	1027
<i>L</i>	<i>R197.135.L12</i>	<i>CARMIN</i>	<i>3002</i>
<i>M</i>	<i>R197.135.M12</i>	<i>PASTEL ORANGE</i>	<i>2003</i>
<i>N</i>	<i>R197.135.N12</i>	<i>PASTELGREEN</i>	<i>6019</i>
<i>Z</i>	<i>R197.135.Z12</i>	<i>WATER BLUE</i>	<i>5021</i>

Note: coding references in bold are available, other coding must be developed.

Issue : 1705 B

In the effort to improve our products, we reserve the right to make changes judged to be necessary.

WATERPROOF R3C MALE

3.2/50S CABLE

R197.135._12

Series : **SMB CARLOCK**

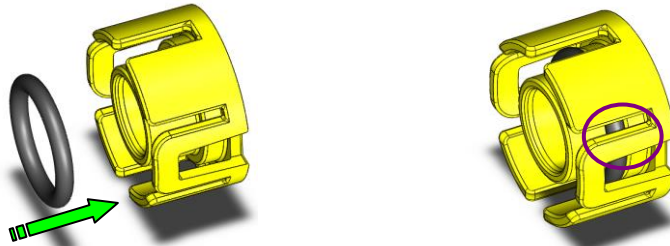
-Storage condition: components should be stored indoors, in its original packaging (box + plastic bag), in a controlled climate environment not exceeding -20°C/+40°C and 60% relative humidity. Components should be protected from direct sunlight and should be used on a "first-in, first-out" basis.

-Shelf Life: it is recommended that housing be used within 1 year from the date of manufacture when stored according to the recommended storage condition.

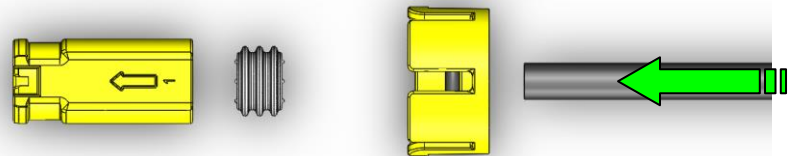
RECOMMENDED MOUNTING PROCEDURE

Note: Before assembly, verify that the cable o-ring is not damaged or cutted.

1 Insert the cap o-ring onto the cap until is in contact at the bottom of the cap.

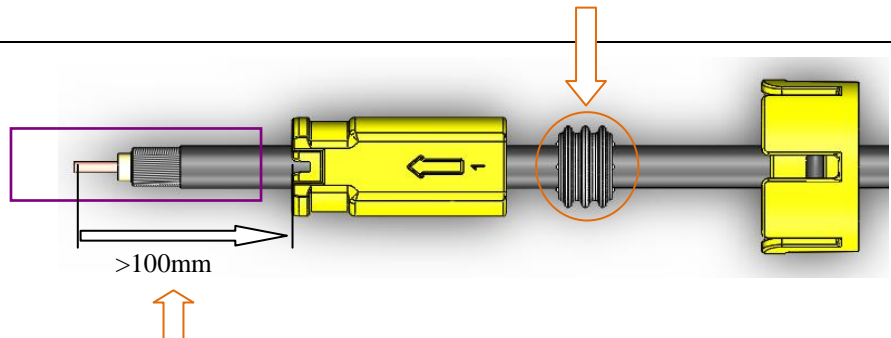


2 Insert the cable through the cap, the cable seal and the sleeve.



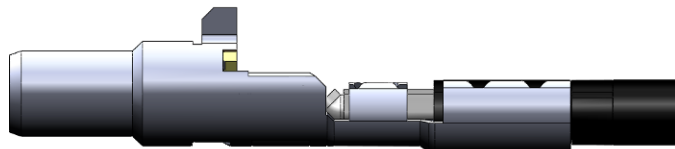
Note : after insertion of the components, do not insert the cable seal inside the cap before R3C crimping

3 Strip the cable according the R299.197.010 connector TDS recommendations.



To avoid any damage on the plastics parts during stripping and crimping operations the parts should be at least at 100mm from cable extremity.

4 Crimp the R299.197.010 connector onto the cable according TDS recommendation.



WATERPROOF R3C MALE

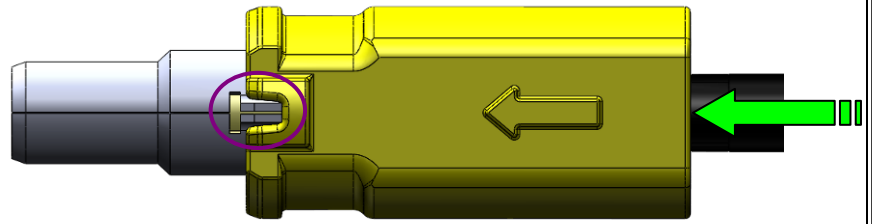
3.2/50S CABLE

R197.135._12

Series : SMB CARLOCK

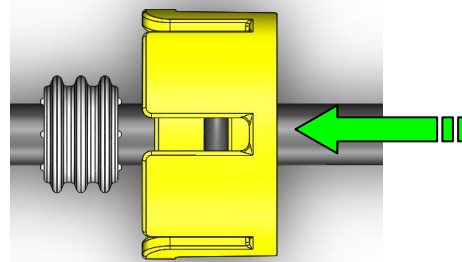
5

Push the sleeve until the tab of the connector is inside the slot of the sleeve.



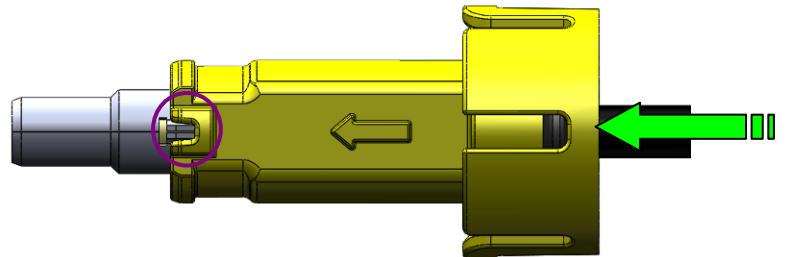
6

Push the cap to insert the cable seal inside it. Verify that the cable seal was not damaged during stripping and crimping operations.



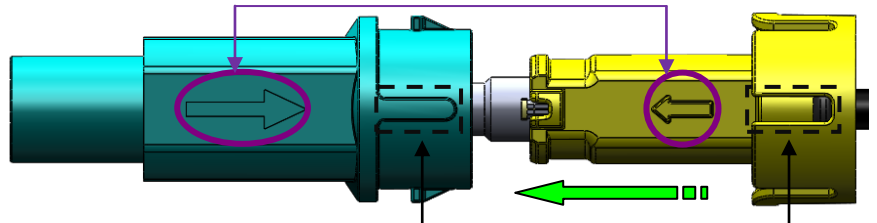
7

Push the cap with the cable seal, until the cap is in contact with the sleeve.



8

Aligned the arrow of the sleeve with the arrow of the housing, and the slots of the cap with ribs of the housing.



9

Then insert the connector with the sleeve and the cap into the housing until the cap is locked onto the housing (each side).

