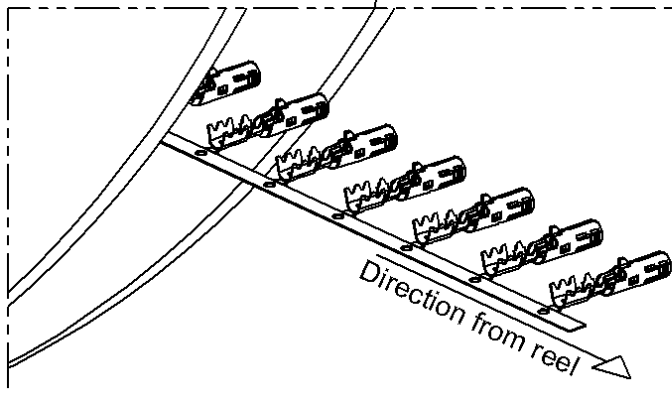
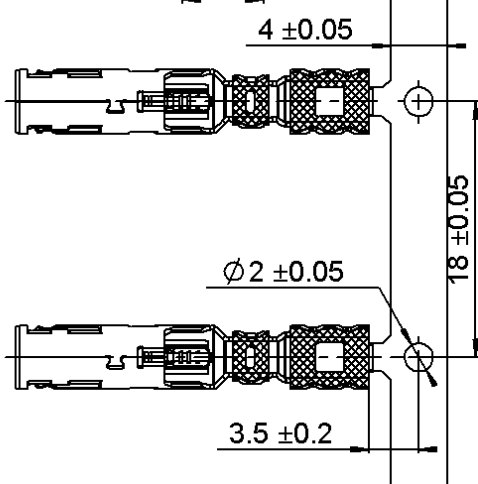
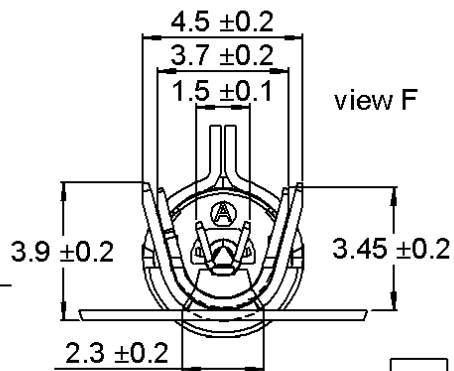
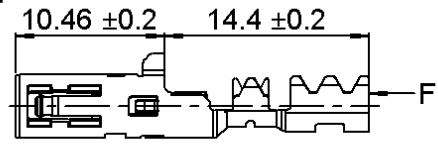
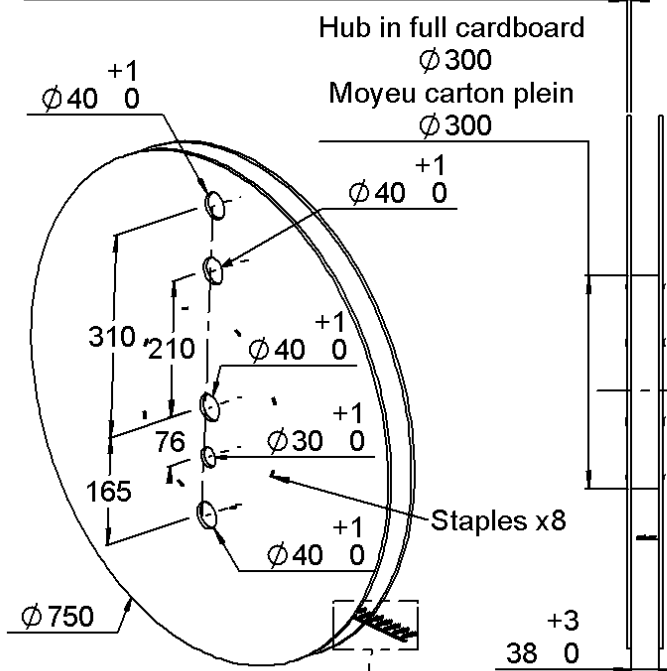


R3C FEMALE COAX CAB 2.6/50
PACKAGING REEL 3000

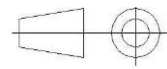
R299.197.200
STANDARD CABLE

Reel sides in cardboard double corugation thick 6±1
 Flasks carton double cannelure 6±1



THIS COAX CAN BE USED WITH HOUSING R197.115._80 (replaced the _ by the coding letter)

All dimensions are in mm.



COMPONENTS	MATERIALS	PLATING (μm)	
BODY	BRONZE	TIN 3 OVER NICKEL 2	
CENTER CONTACT	BRONZE	SELECTIVE GOLD+ SELECTIVE TIN	
OUTER CONTACT	POLYMER	UL CLASSIFICATION	COLOR
INSULATOR		UL94-V0	NATURAL

Standard Packaging : 3000+/-2%*

* Nota : possibility of having a maximum of five missing parts consecutively on the tape

Issue : 1408 C

In the effort to improve our products, we reserve the right to make changes judged to be necessary.



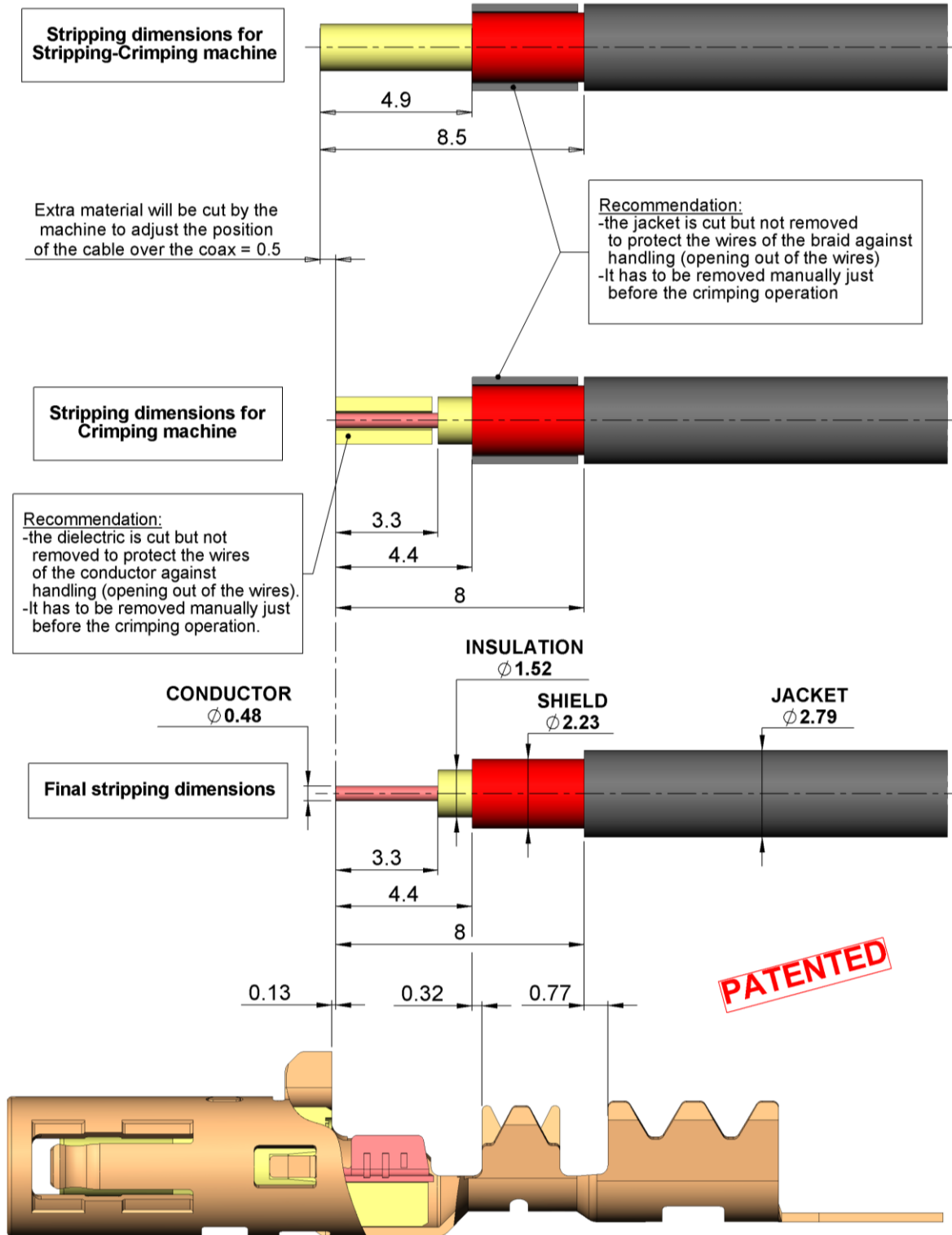
R3C FEMALE COAX CAB 2.6/50

PACKAGING REEL 3000

R299.197.200

STANDARD CABLE

Recommended stripping dimensions of the RG174 cable for R3C female R299.197.200



Issue : 1408 C

In the effort to improve our products, we reserve the right to make changes judged to be necessary.

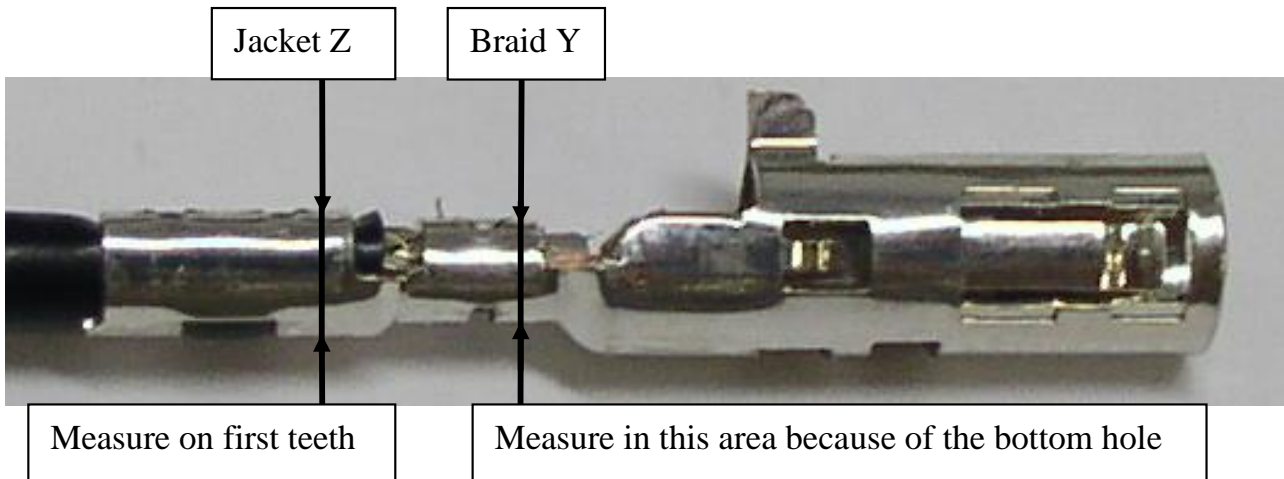
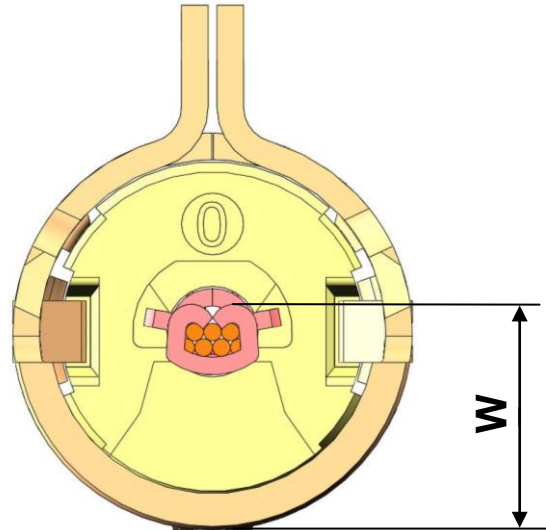
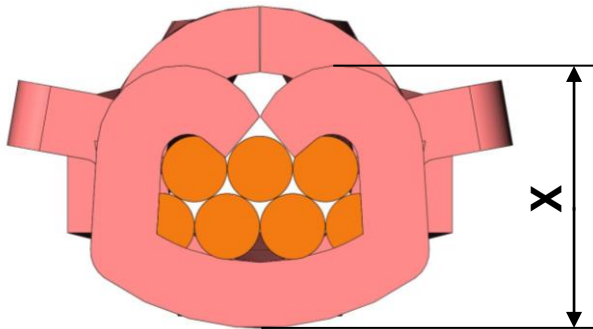
R3C FEMALE COAX CAB 2.6/50

PACKAGING REEL 3000

R299.197.200

STANDARD CABLE

crimping height **				
Conductor type	Conductor/body W	Conductor X	Braid Y	Jacket Z
Stranded	2.32±0.05	0.78±0.05	2.32±0.05	2.8 +0.1/-0.03



**** CAUTION**

-Before using applicator, make sure the press is calibrated :135,8 mm from the lower dead point up to the base

-Crimping height may change depending on the manufacturer of the cable, for more informations please contact us

-We recommend to make electrical test after each set up of the applicator:

Outer and center contact continuity+Dielectric withstanding voltage 800Vrms, 50Hz

Insulation resistance 1000 Mohms

Cable retention = 110Newton mini during 5 seconds with electrical continuity

Issue : 1408 C

In the effort to improve our products, we reserve the right to make changes judged to be necessary.